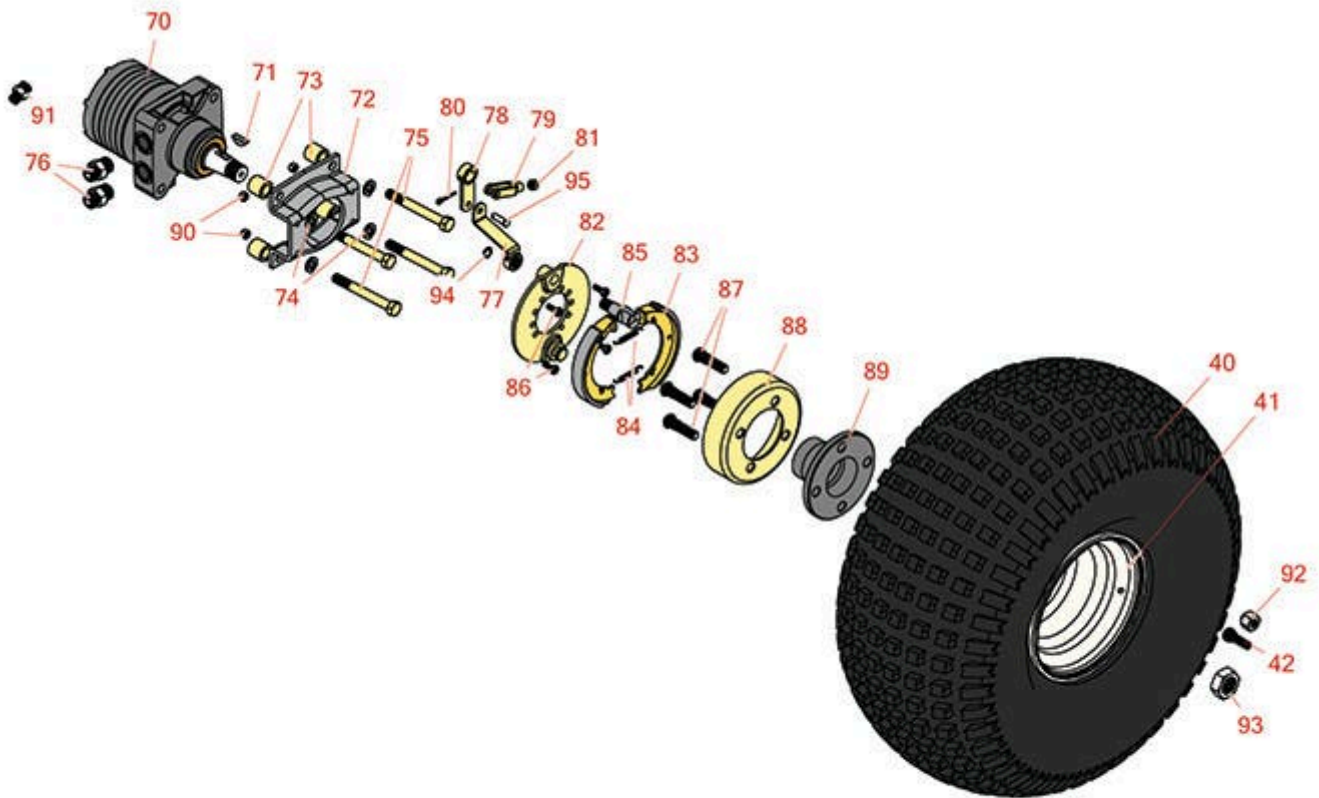




# Replaces Toro Sand Pro 5000 Parts

Traction Unit  
Rear Wheel



FOR MORE TIRE SELECTIONS PLEASE  
CLICK ON THE TIRE ICON ABOVE

All original equipment manufacturers names and part numbers are used for identification purposes only, and we are in no way implying that our products are original equipment parts. Prices subject to change without notice.



# Replaces Toro Sand Pro 5000 Parts

Traction Unit  
Rear Wheel



Item No	R&R Part No.	OEM Part No.	Description	Qty Req	Order Quantity
---------	--------------	--------------	-------------	---------	----------------

## Tires and Wheels

0	<b>TIRES</b>		<a href="#">Click Here to View Complete Tire Selection</a>	0	
40	<b>RCT537050</b>	28-1070, 85-8290	Tire - 22x11.00-8 Nhs (2 Ply) Carlisle Knobby	2	
<i>Detail Description: Elevate your off-road adventures with the Carlisle Knobby tire. This tire offers a unique design with options available in both solid and dimple tread patterns. Whether you're tackling rugged trails or navigating through challenging terrain, the Carlisle Knobby tire delivers maximum performance and traction. It is specially designed for ATVs and golf carts, providing the reliability and durability you need for your outdoor adventures. Upgrade your ATV or golf cart with the Carlisle Knobby tire and experience the difference it makes in your outdoor excursions. Maximize your traction, durability, and versatility. Buy the Carlisle Knobby tire today and unleash the full potential of your off-road adventures.:</i>					
40	<b>RTK1108-2S-I</b>		Tire - 22x11.00-8 (2 Ply) Kenda Scorpion	2	
40	<b>R95-0621</b>	95-0621	Tire & Wheel - 22x11.00-8 Nhs (2 Ply) Carlisle Knobby	2	
41	<b>R94-6116</b>	114-4643, 242-53, 242-86, 46-4810, 94-6116	Rim - 8x8.5 White	2	
42	<b>R232-24</b>	232-24, 232-35	Stem - Valve w/ Cap	2	

## Other Parts Available

70	<b>R75-9831</b>	49-8621, 75-9831	Hydraulic Motor - LH Rear	1	
70	<b>R75-9840</b>	49-8600, 49-8630, 75-9840	Hydraulic Motor - RH Rear	1	
71	<b>R3257-42</b>	3257-42	Key - Woodruff 5/16 x 1	2	
72	<b>R84-2000-03</b>	84-2000, 84-2000-03, 84-2000-0P	Bracket - Brake	2	

All original equipment manufacturers names and part numbers are used for identification purposes only, and we are in no way implying that our products are original equipment parts. Prices subject to change without notice.



# Replaces Toro Sand Pro 5000 Parts

*Traction Unit  
Rear Wheel*



Item No	R&R Part No.	OEM Part No.	Description	Qty Req	Order Quantity
73	<b>R92-1715</b>	100005, 92-1715	Spacer	8	
74	<b>R3253-7</b>	01-166-0030, 01-166-0080, 01-166-0290, 01-166-0810, 23-13-GD, 3253-7, 48-9380	Washer - Lock 1/2	8	
75	<b>R325-13</b>	01-178-0826, 20-94-AGD, 325-13, 325-26, Jul-52	Bolt - Hex HD 1/2-13 x 3-1/4	8	
76	<b>R340-6</b>	340-6	Hydraulic Fitting - Straight	4	
77	<b>R93-6850</b>	114-2726, 127-8567, 93-6850	Lever - Brake	2	
78	<b>R83-9310</b>	83-9310	Lever - Brake	2	
79	<b>R282-2</b>	1-303105, 282-2	Yoke	2	
80	<b>R3272-10</b>	01-151-0120, 105-7512, 3272-10, N/A	Pin - Cotter 1/8 x 3/4	2	
81	<b>R3220-2</b>	01-191-0524, 3220-2	Nut - Jam - 5/16-24	2	
82	<b>R70-9870</b>	70-9870	Plate - Backing	2	
83	<b>R70-9840</b>	70-9840	Shoe - Brake	4	
84	<b>R70-9880</b>	70-9880	Spring - Brake Shoe	4	
85	<b>R104-7707</b>	104-7707, 104-7708, 70-9850, 70-9860	Cam - Brake	2	

All original equipment manufacturers names and part numbers are used for identification purposes only, and we are in no way implying that our products are original equipment parts. Prices subject to change without notice.



# Replaces Toro Sand Pro 5000 Parts

*Traction Unit*

*Rear Wheel*



Item No	R&R Part No.	OEM Part No.	Description	Qty Req	Order Quantity
86	<b>R321-4</b>	01-150-1030, 01-178-0406, 20-3-AGD, 321-4, 3222-1	Bolt - Hex HD 1/4-20 x 3/4	8	
87	<b>R85-6540</b>	85-6540	Stud - Drive 1/2-20 x 2	8	
88	<b>R10-6850</b>	10-6850	Drum - Brake	2	
89	<b>R93-6838-03</b>	17-4710-03, 93-6838, 93-6838-03	Hub-Wheel	2	
90	<b>R301504</b>	2296-42, 301504, 32127-24, 32128-33, 32146-17, 3296-16, 3296-42, 3296-42 , 915661P	Locknut - ESNA 1/4-20	8	
91	<b>R340-2</b>	340-2, 60-1920	Hydraulic Fitting - Striaight	1	
92	<b>R242-50</b>	242-50	Nut - 1/2-20 Wheel	8	
93	<b>R26-3790</b>	26-3790	Nut - Hex - Wheel Motor 1-20	2	
94	<b>R32120-47</b>	32120-47, 4583, 5701P	Ring-Retaining - External	2	
95	<b>R283-1</b>	283-1, 283-13	Pin - Clevis	2	

All original equipment manufacturers names and part numbers are used for identification purposes only, and we are in no way implying that our products are original equipment parts. Prices subject to change without notice.