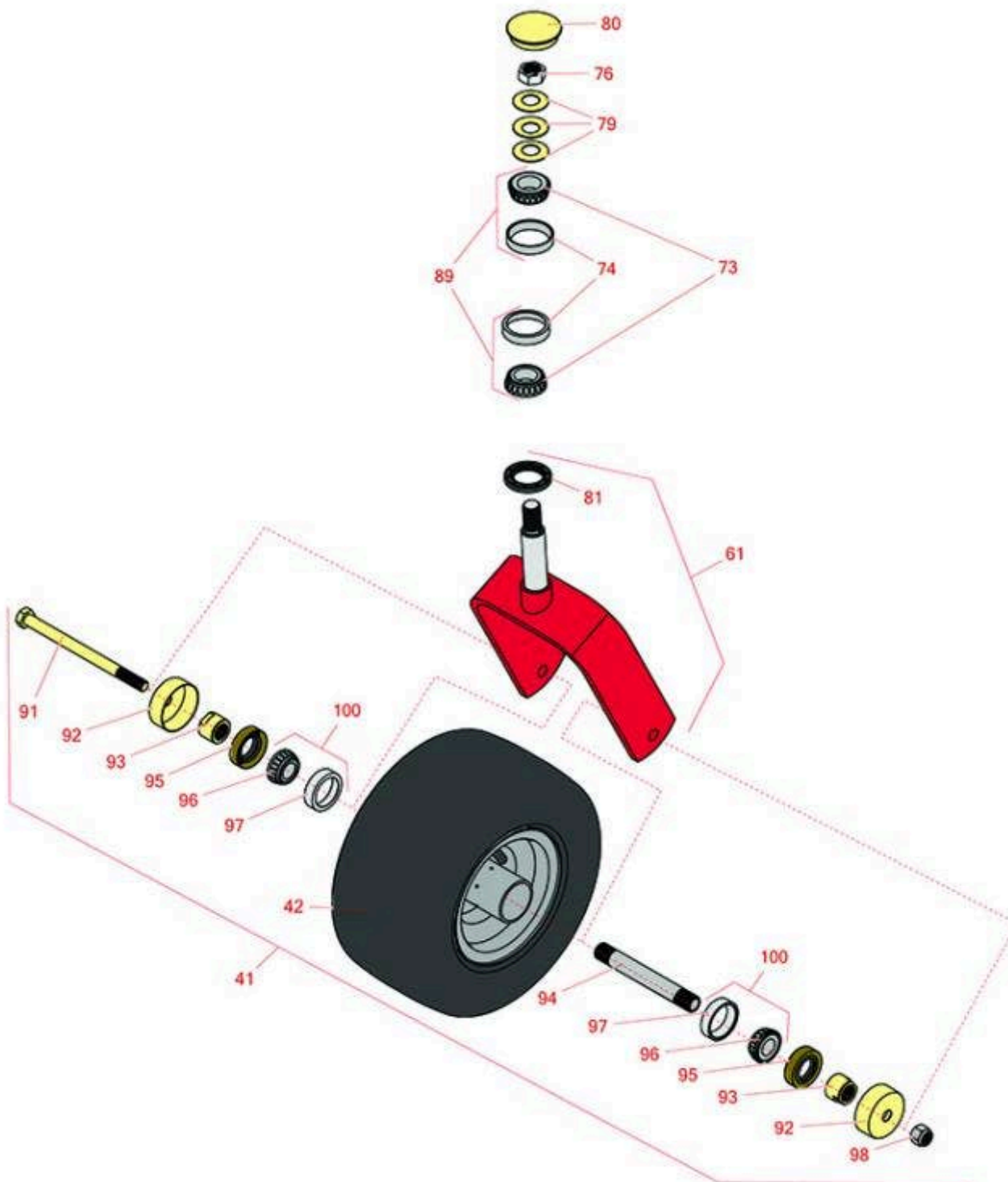




Replaces Exmark Lazer Z HP-Series Parts

Zero-Turn Mower with 56 in Deck - Models LHP23KA565,
LHP27KC565
Caster Wheel



All original equipment manufacturers names and part numbers are used for identification purposes only, and we are in no way implying that our products are original equipment parts. Prices subject to change without notice.



Replaces Exmark Lazer Z HP-Series Parts

Zero-Turn Mower with 56 in Deck - Models LHP23KA565,
LHP27KC565
Caster Wheel



Item No	R&R Part No.	OEM Part No.	Description	Qty Req	Order Quantity
---------	--------------	--------------	-------------	---------	----------------

Tires

41	R103-5189	103-3785, 103-5189	Tire & Wheel - 13x5.00-6 Smooth Pneumatic 4 Ply	2	
42	RCT5120211	1-633002	Tire - 13x5.00-6 Nhs (4 Ply) Carlisle Smooth	2	

Other parts

61	R116-8883	1-632511-01	Caster Fork Assy Incl Seal 6.25 in Inside	2	
61	R1-632511-01	1-632511-01	Caster Fork Assy Incl Seal 6.25 in Inside	0	
73	R254-94	1-543509	Tapered Bearing Cone	4	
74	R254-72	1-543508	Cup - Bearing	4	
76	R3296-51	3296-51	Nut - Nylon Lock 3/4-10 Gr 8	2	
79	R1-633508	1-633508	Washer - Spring Disc	6	
80	R103-4882	103-4882	Grease Cap - Castor	2	
81	R1-543511	1-543511, R & R ONLY	Seal- Grease	2	
89	R500596	R & R ONLY	Tapered Bearing Set - Cup and Cone	4	
91	R325-37	325-36, 325-37	Bolt - Hex Head 1/2-13 x 7 Grade 5	2	
92	R103-2768	103-2768	Guard - Seal	4	
93	R103-3051	103-3051	Spacer - Nut - Hardened	4	
94	R103-3155	103-3155	Axle - Caster	2	
95	R103-0063	103-0063	Seal - Grease	4	
96	R254-78	1-633585	Tapered Bearing Cone	4	

All original equipment manufacturers names and part numbers are used for identification purposes only, and we are in no way implying that our products are original equipment parts. Prices subject to change without notice.



Replaces Exmark Lazer Z HP-Series Parts

Zero-Turn Mower with 56 in Deck - Models LHP23KA565,
LHP27KC565
Caster Wheel



Item No	R&R Part No.	OEM Part No.	Description	Qty Req	Order Quantity
97	R254-79	1-633584, R & R ONLY	Cup - Bearing	4	
<i>Detail Description: Use R254-79M installation mandrel to properly install race.:</i>					
98	R3296-25	3296-45	Locknut - 1/2-13 Heavy ESNA	2	
100	R500534	1-633585, R & R ONLY	Bearing - with Cup	4	
<i>Detail Description: Kit includes: 1 ea R254-78- Bearing Cone & R254-79 Bearing Cone:</i>					

All original equipment manufacturers names and part numbers are used for identification purposes only, and we are in no way implying that our products are original equipment parts. Prices subject to change without notice.