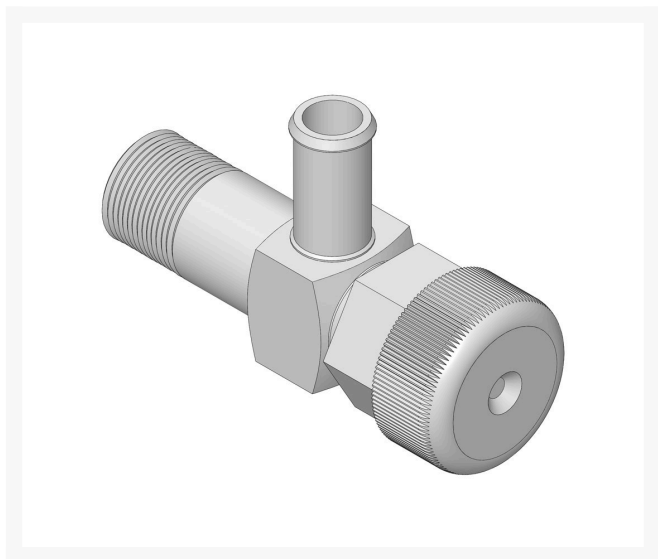




## B-S Valve-Oil Drn Shtof

RS492030



### Details

A magnetic oil drain plug is recommended with Oil Gard. 1/2 turn oil drain fitting makes oil changes easier. Models (horizontal crankshaft) - 5 Gross HP and under, 1/4 x 18 NPTF (1/4" I.D. Dia.).

### Specifications

Manufacturer

Briggs & Stratton