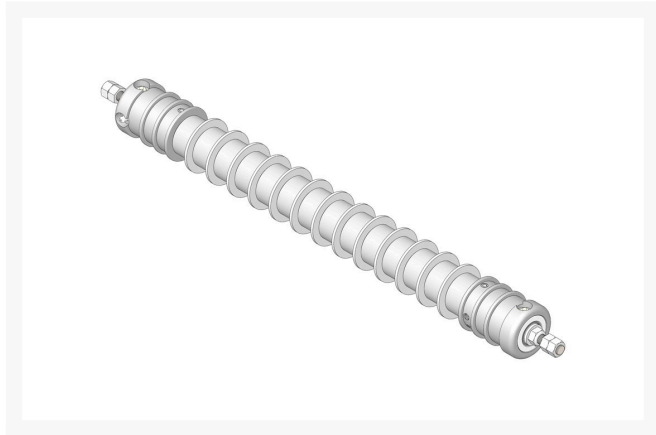




# Roller - Grooved Repairable Steel

## R170710R



### Details

Constructed with a through shaft and greasable tapered bearings for extended life, this roller can be repaired by unscrewing the ends and replacing the series of washers and spacers.

### Replaces

R&R Products	R170710
--------------	---------

### Specifications

Manufacturer	R&R Products
Overhaul Kit No.	R100200
Roller Body Diameter	2.75 in
Weight	20 lb

### Fits Models

Ransomes 180

### Replacement Parts

R100200	Overhaul Kit - Roller
R500534	Bearing - with Cup
R170713	Shaft - Heavy Duty RR Roller
R150672	Washer - 2-3/4 Roller
R150676	Spacer - 2-3/4 Dia x 1-1/4 L
R150691	Screw - Set Nyloc 3/8-16 x 3/8
R150670	Roller End - 2-3/4 Threaded
R170714	Fitting - Pressure Relief
R302-5	Fitting - Grease
R253-122	Seal

**GA Power Equipment Spares**

11 Sodium St Narangba, 4504  
1300 363 004

<https://rgs.rrproducts.com/>



# Roller - Grooved Repairable Steel

R170710R



R254-79	Cup - Bearing
R254-78	Tapered Bearing Cone
R253-117	Seal - Outer Triple Lip
R150674	Sleeve - Wear 3/4 Plated
R170716	Locknut - 1/2-13 Flanged
R443818	Nut - 1/2-13 Hex Jam Zinc