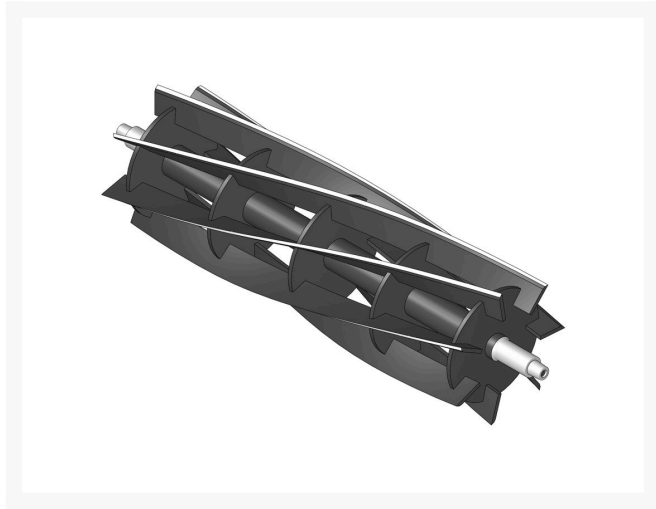




Reel - 7 Blade R101329



Details

R&R Reel blades are manufactured from high carbon-boron alloy steel and then hardened to RC46-49 to match the temper of our bedknives and original equipment bedknives. All R&R Reels are cylindrically ground on bearing surfaces and then relief ground. Reels are then precision computer balanced for extended bearing and reel life. R&R Products Reels are guaranteed against defects in material and workmanship for the life of the reel under normal use.

- High Carbon-Boron Alloy Steel
- Cylindrically Ground on Bearing Surfaces
- Precision Computer Balanced

Specifications

Manufacturer

R&R Products

Fits Models

Jacobsen LF-135
Jacobsen LF-3400
Jacobsen LF-3800
Jacobsen LF-4677
Jacobsen LF-570