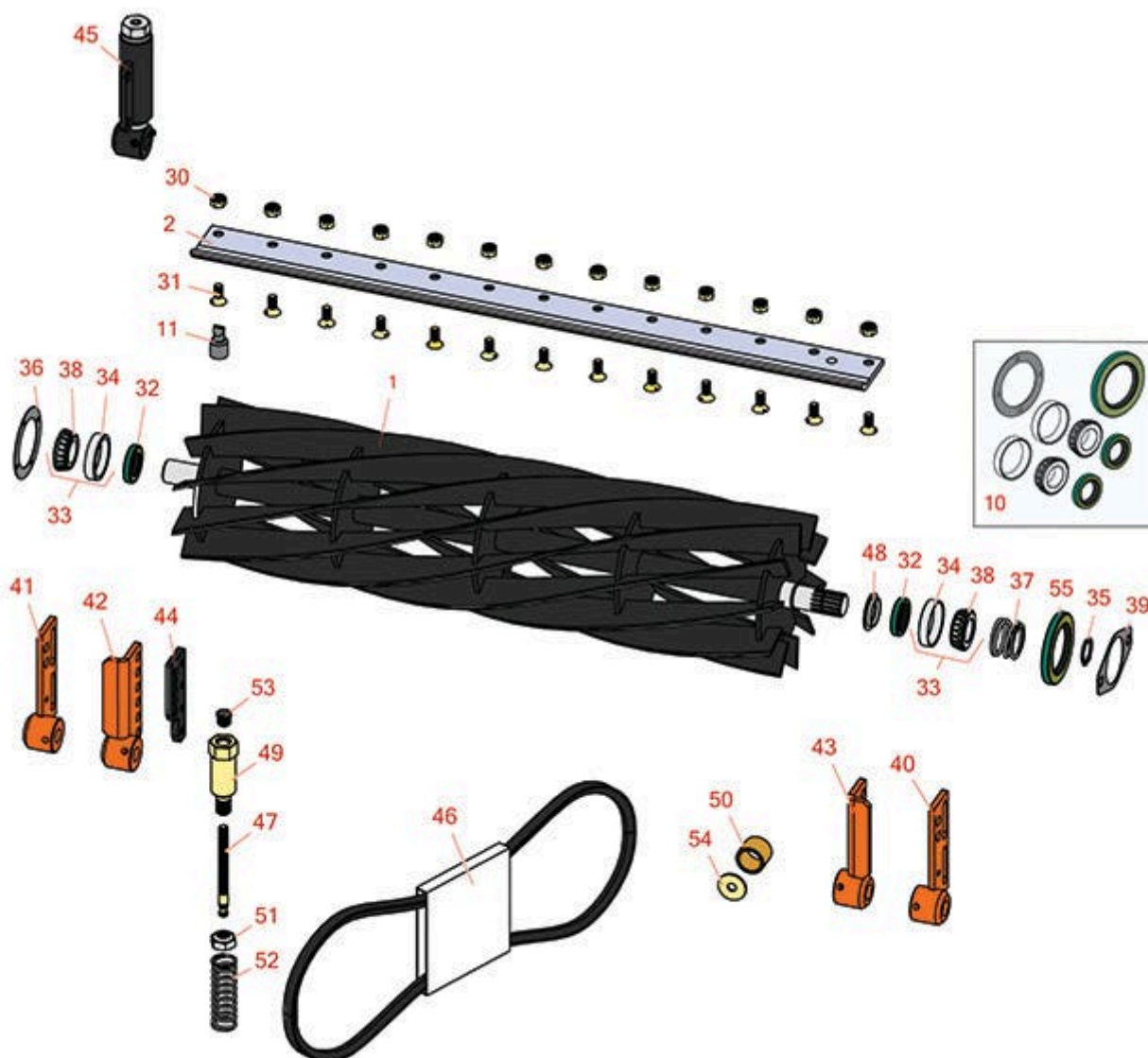




# Replaces Jacobsen Tri-King 1671 Parts

26" Belt Drive Cutting Unit  
Reel & Bedknife



All original equipment manufacturers names and part numbers are used for identification purposes only, and we are in no way implying that our products are original equipment parts. Prices subject to change without notice.



# Replaces Jacobsen Tri-King 1671 Parts

26" Belt Drive Cutting Unit  
Reel & Bedknife



Item No	R&R Part No.	OEM Part No.	Description	Qty Req	Order Quantity
---------	--------------	--------------	-------------	---------	----------------

## R&R Reels, Lifetime Guaranteed

1	<b>R503274</b>	122547, 503274	Reel - 5 Blade LH 26 in	2	
---	----------------	-------------------	-------------------------	---	--

*Detail Description: R&R Reel blades are expertly crafted from premium high carbon-boron alloy steel, heat-treated to perfectly complement both R&R and OEM bedknives. Each reel undergoes precision cylindrical grinding on bearing surfaces, followed by relief grinding for optimal performance. Advanced computer balancing ensures extended reel and bearing life. Backed by our lifetime guarantee against defects in materials and craftsmanship under normal use, R&R Reels deliver unmatched durability and cutting precision you can trust.:*

1	<b>R503275</b>	122546, 503275	Reel - 5 Blade RH 26 in	1	
---	----------------	-------------------	-------------------------	---	--

*Detail Description: R&R Reel blades are expertly crafted from premium high carbon-boron alloy steel, heat-treated to perfectly complement both R&R and OEM bedknives. Each reel undergoes precision cylindrical grinding on bearing surfaces, followed by relief grinding for optimal performance. Advanced computer balancing ensures extended reel and bearing life. Backed by our lifetime guarantee against defects in materials and craftsmanship under normal use, R&R Reels deliver unmatched durability and cutting precision you can trust.:*

1	<b>R5002088</b>	5002088	Reel - 7 Blade RH 26 in	2	
---	-----------------	---------	-------------------------	---	--

*Detail Description: R&R Reel blades are expertly crafted from premium high carbon-boron alloy steel, heat-treated to perfectly complement both R&R and OEM bedknives. Each reel undergoes precision cylindrical grinding on bearing surfaces, followed by relief grinding for optimal performance. Advanced computer balancing ensures extended reel and bearing life. Backed by our lifetime guarantee against defects in materials and craftsmanship under normal use, R&R Reels deliver unmatched durability and cutting precision you can trust.:*

1	<b>R5002087</b>	5002087	Reel - 7 Blade LH - 26 in	1	
---	-----------------	---------	---------------------------	---	--

*Detail Description: R&R Reel blades are expertly crafted from premium high carbon-boron alloy steel, heat-treated to perfectly complement both R&R and OEM bedknives. Each reel undergoes precision cylindrical grinding on bearing surfaces, followed by relief grinding for optimal performance. Advanced computer balancing ensures extended reel and bearing life. Backed by our lifetime guarantee against defects in materials and craftsmanship under normal use, R&R Reels deliver unmatched durability and cutting precision you can trust.:*

1	<b>R503276</b>	122549, 503276	Reel - 10 Blade LH/Center - 26 in	2	
---	----------------	-------------------	-----------------------------------	---	--

All original equipment manufacturers names and part numbers are used for identification purposes only, and we are in no way implying that our products are original equipment parts. Prices subject to change without notice.



# Replaces Jacobsen Tri-King 1671 Parts

26" Belt Drive Cutting Unit  
Reel & Bedknife



Item No	R&R Part No.	OEM Part No.	Description	Qty Req	Order Quantity
---------	--------------	--------------	-------------	---------	----------------

*Detail Description:* R&R Reel blades are expertly crafted from premium high carbon-boron alloy steel, heat-treated to perfectly complement both R&R and OEM bedknives. Each reel undergoes precision cylindrical grinding on bearing surfaces, followed by relief grinding for optimal performance. Advanced computer balancing ensures extended reel and bearing life. Backed by our lifetime guarantee against defects in materials and craftsmanship under normal use, R&R Reels deliver unmatched durability and cutting precision you can trust.:

1	<b>R503277</b>	122548, 503277	Reel - 10 Blade RH - 26 in	1	
---	----------------	-------------------	----------------------------	---	--

*Detail Description:* R&R Reel blades are expertly crafted from premium high carbon-boron alloy steel, heat-treated to perfectly complement both R&R and OEM bedknives. Each reel undergoes precision cylindrical grinding on bearing surfaces, followed by relief grinding for optimal performance. Advanced computer balancing ensures extended reel and bearing life. Backed by our lifetime guarantee against defects in materials and craftsmanship under normal use, R&R Reels deliver unmatched durability and cutting precision you can trust.:

## R&R Bedknives, Lifetime Guaranteed

2	<b>R3000249</b>	3000249, 336419, 554284	Bedknife - 7/16 - 26 Inch	3	
---	-----------------	-------------------------------	---------------------------	---	--

## Overhaul Kits & Service Tools

10	<b>R100131</b>		Overhaul Kit - Cutting Unit	0	
----	----------------	--	-----------------------------	---	--

*Detail Description:* Includes 2 ea.: R254-72 Bearing Cups, R254-94 Bearing Cones, R337593 Seals; 1 ea.: R338362 Seal & R364147 Gasket:

11	<b>R101272T</b>		Bedknife Screw Driver Tool	0	
----	-----------------	--	----------------------------	---	--

*Tech Note:* Easily install and remove bed knife screws with the help of a ratchet. Tool manufactured with hardened alloy steel.:

*Detail Description:* Easily install and remove bed knife screws with the help of a ratchet. Tool manufactured with hardened alloy steel.:

## Other Parts Available

30	<b>R101271</b>	445684	Nut - Bedknife	11	
31	<b>R101270</b>	402698, 403757	Screw - Bedknife 3/8-24 x 13/16	11	

All original equipment manufacturers names and part numbers are used for identification purposes only, and we are in no way implying that our products are original equipment parts. Prices subject to change without notice.



## Replaces Jacobsen Tri-King 1671 Parts

26" Belt Drive Cutting Unit  
Reel & Bedknife



Item No	R&R Part No.	OEM Part No.	Description	Qty Req	Order Quantity
32	R337593	3000983, 337593	Seal	2	
33	R500596	500596	Tapered Bearing Set - Cup and Cone	2	
34	R254-72	313456	Cup - Bearing	2	
35	R458039	458039	Ring - Retaining	1	
36	R364147	364147	Gasket - Cover	1	
37	R364148	364148	Spring - Reel Brg Tension	1	
38	R254-94	313089	Tapered Bearing Cone	2	
39	R364777	364777	Gasket - Motor End	1	
40	R132313	132313	Bracket - Roller LH	1	
41	R132312	132312	Bracket - Roller RH	1	
42	R132028	132028	Bracket - Front H.O.C. RH	1	
43	R132029	132029	Bracket - Front H.O.C. LH	1	
44	R338859	338859	Plate - Backup Roller Bracket	2	
45	R131879	131879	Bracket Adj Assy - Rear Roller	2	
46	R390704	390704	Belt - Mower	1	
47	R364265	364265	Screw - Adjusting Reel 3/8-16 Thd	2	
48	R364275	364275	Disc - Reel Shaft	2	
49	R365994	365994	Handle - Adjusting 3/8-16 Thread	2	
50	R364140	364140	Bushing	2	

*Tech Note: Pull Frame:*

All original equipment manufacturers names and part numbers are used for identification purposes only, and we are in no way implying that our products are original equipment parts. Prices subject to change without notice.



## Replaces Jacobsen Tri-King 1671 Parts

26" Belt Drive Cutting Unit  
Reel & Bedknife



Item No	R&R Part No.	OEM Part No.	Description	Qty Req	Order Quantity
51	<b>R3296-33</b>	444820, 445718, 445801	Locknut - 5/8-18 ESNA Jam	2	
52	<b>R366973</b>	366973	Spring - Reel Adjusting	2	
53	<b>R472519</b>	472519	Plug - Adjusting Handle	2	
54	<b>R319755</b>	319755	Washer - Spring Mt	1	
55	<b>R338362</b>	338362	Seal - Oil Reel	1	

All original equipment manufacturers names and part numbers are used for identification purposes only, and we are in no way implying that our products are original equipment parts. Prices subject to change without notice.