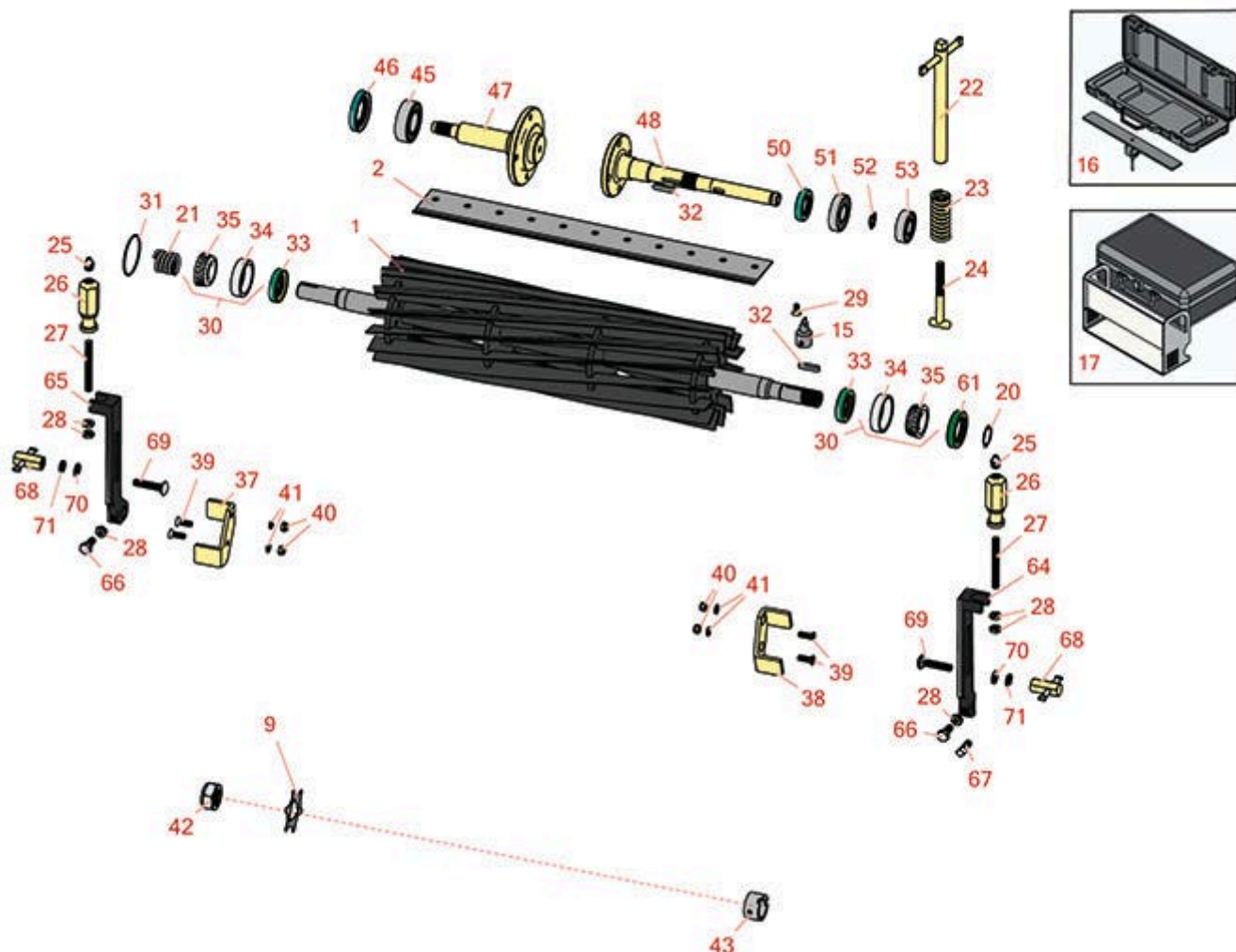




# Replaces John Deere 180A Walk-Behind Greens Mower Parts

Cutting Unit  
Reel & Bedknife



All original equipment manufacturers names and part numbers are used for identification purposes only, and we are in no way implying that our products are original equipment parts. Prices subject to change without notice.



# Replaces John Deere 180A Walk-Behind Greens Mower Parts

Cutting Unit  
Reel & Bedknife



Item No	R&R Part No.	OEM Part No.	Description	Qty Req	Order Quantity
---------	--------------	--------------	-------------	---------	----------------

## R&R Reels, Lifetime Guaranteed

1	<b>RAMT2866</b>	AMT2279, AMT2866	Reel - 11 Blade	1	
---	-----------------	---------------------	-----------------	---	--

*Detail Description: R&R Reel blades are expertly crafted from premium high carbon-boron alloy steel, heat-treated to perfectly complement both R&R and OEM bedknives. Each reel undergoes precision cylindrical grinding on bearing surfaces, followed by relief grinding for optimal performance. Advanced computer balancing ensures extended reel and bearing life. Backed by our lifetime guarantee against defects in materials and craftsmanship under normal use, R&R Reels deliver unmatched durability and cutting precision you can trust.:*

1	<b>R130230</b>		Reel - 14 Blade	1	
---	----------------	--	-----------------	---	--

*Detail Description: R&R Reel blades are expertly crafted from premium high carbon-boron alloy steel, heat-treated to perfectly complement both R&R and OEM bedknives. Each reel undergoes precision cylindrical grinding on bearing surfaces, followed by relief grinding for optimal performance. Advanced computer balancing ensures extended reel and bearing life. Backed by our lifetime guarantee against defects in materials and craftsmanship under normal use, R&R Reels deliver unmatched durability and cutting precision you can trust.:*

## R&R Bedknives, Lifetime Guaranteed

2	<b>RMT4846</b>	MT4846, MT4906, UC18877	Bedknife - Tournament	1	
---	----------------	-------------------------------	-----------------------	---	--

*Detail Description: R&R Bedknives are manufactured from high carbon-boron alloy steel and then hardened to RC46-49 to match the temper of our reel blades and original equipment reels. Bedknives are surface ground on the top and front edge and straightened three times before being packaged with oil for rust prevention. All R&R Bedknives now have an increased front edge grind for added life. All R&R Bedknives are guaranteed against defects in material and workmanship under normal use for the life of the part.:*

2	<b>RMT6944</b>	MT6944, MT7350, UC19156	Bedknife - Low Cut Min HOC .079	1	
---	----------------	-------------------------------	------------------------------------	---	--

*Detail Description: R&R Bedknives are manufactured from high carbon-boron alloy steel and then hardened to RC46-49 to match the temper of our reel blades and original equipment reels. Bedknives are surface ground on the top and front edge and straightened three times before being packaged with oil for rust prevention. All R&R Bedknives now have an increased front edge grind for added life. All R&R Bedknives are guaranteed against defects in material and workmanship under normal use for the life of the part.:*

## Blades

All original equipment manufacturers names and part numbers are used for identification purposes only, and we are in no way implying that our products are original equipment parts. Prices subject to change without notice.



# Replaces John Deere 180A Walk-Behind Greens Mower Parts

Cutting Unit  
Reel & Bedknife



Item No	R&R Part No.	OEM Part No.	Description	Qty Req	Order Quantity
9	RET14707	ET14707	Verti-Cut Blade - .025 x 2.375	75	
9	RET14707C		Verti-Cut Blade - .025 x 2.375 Carbide Tipped	75	

## Service Tools

15	R101278T		Bedknife Screw Driver Tool	1	
<i>Tech Note: Easily install and remove bed knife screws with the help of a ratchet. Tool manufactured with hardened alloy steel.:</i>					
<i>Detail Description: Easily install and remove bed knife screws with the help of a ratchet. Tool manufactured with hardened alloy steel.:</i>					
16	R184		Masters Gauge - Digital - Inches/Metric	1	
<i>Detail Description: Accurately measures desired height of cut. Easy to read digital indicator. Displays measurements in decimals and fractions, in English and Metric. 18" length.:</i>					
16	R175		Masters Gauge - Inches	1	
<i>Detail Description: Dial indicator accurately measures desired height of cut. Easy to use. Place the bar on front and rear rollers then push the measuring rod until it touches the bedknife edge. Hard anodized aluminum. Fits all greensmowers. Easy to read dial indicator. Displays measurements in .001" increments. 18" length.:</i>					
17	RP508		Turf Evaluation and Height of Cut Prism Tool	1	
<i>Detail Description: Measure actual turfgrass height of cut, as well as, smoothness and quality of cut, on your greens to 100th of an inch. This impressive Height of Cut Prism Gauge is designed with a solid glass prism in a stainless steel frame. Graduated lines show 1/8th, 1/10th and 1/16th (.002 lines) and 1 mm intervals with grass measurements up to 1-5/8 inches or 40 mm. tall. Complete with protective case. Measures inches and metric.:</i>					

## Other Parts Available

20	R40M7080	40M7080, ET11059	Ring - Snap	1	
21	RET11053	ET11053	Spring - Reel	1	
22	RET11068	ET11068	Handle - Adjusting RH	1	

All original equipment manufacturers names and part numbers are used for identification purposes only, and we are in no way implying that our products are original equipment parts. Prices subject to change without notice.



# Replaces John Deere 180A Walk-Behind Greens Mower Parts

Cutting Unit  
Reel & Bedknife



Item No	R&R Part No.	OEM Part No.	Description	Qty Req	Order Quantity
22	RET11069	ET11069	Handle - Adjusting LH	1	
23	RET11070	ET11070	Spring - Bed Bar	2	
24	RET11372	ET11372	Bolt - Adjusting Bed Bar	2	
25	R471219	471219, 471231, JD7759, JD7798	Zerk - Grease	2	
26	RMT1087	MT1087	Knob - Adjusting Roller	2	
27	RMT1088	MT1088	Stud - Roller Adj.	2	
28	R14M7151	14M7151	Nut - Jam Roller Adj	6	
29	R101278	21M7194	Screw - Bedknife	13	
30	R500610	AMT1108	Tapered Bearing Set - Cup and Cone	2	
<i>Detail Description: Includes:RAMT1108 &amp; RMT2108:</i>					
31	RM44162	M44162	O-Ring - Reel	1	
32	R49M7049	49M7049	Key - 5mm x 22mm	1	
33	RMT1160	MT1160	Seal - Reel	2	
34	RMT2108	MT2108	Tapered Bearing Cup	2	
35	RAMT1108	AMT1108	Tapered Bearing Cone	2	
37	RET11112	ET11112	Bracket - RH	1	
38	RET11113	ET11113	Bracket - LH	1	
39	R21M7326	21M7326	Screw - M6 x 20mm	4	
40	RE68605	E68605	Locknut - 6mm	4	
41	R24M7139	24M7139	Washer - Flat 6mm	4	

All original equipment manufacturers names and part numbers are used for identification purposes only, and we are in no way implying that our products are original equipment parts. Prices subject to change without notice.



# Replaces John Deere 180A Walk-Behind Greens Mower Parts

*Cutting Unit  
Reel & Bedknife*



Item No	R&R Part No.	OEM Part No.	Description	Qty Req	Order Quantity
42	<b>RN198341</b>	N198341	Nut - Nyloc 7/8-14	1	
43	<b>RET14917</b>	ET14917	Spacer	1	
45	<b>R345050</b>	AZ20217	Bearing	2	
46	<b>RET10285</b>	ET10285	Seal	2	
47	<b>RET11081</b>	ET11081	Spindle - Traction Roller	1	
48	<b>RET11075</b>	ET11075	Shaft - Rear Traction Roller	2	
50	<b>RET11095</b>	ET11095	Seal	2	
51	<b>RA203604</b>	ET11094	Bearing	2	
52	<b>R40M1863</b>	40M1863	Ring - Snap	2	
53	<b>RA203603</b>	JD8535	Bearing	2	
61	<b>RET11073</b>	ET11073	Seal - Reel Outer	1	
64	<b>RMT5244</b>	MT5244	Bracket - Roller LH	1	
65	<b>RMT5245</b>	MT5245	Bracket - Roller RH	1	
66	<b>R19M7881</b>	19M7881	Bolt - Hex HD M8-1.25 x 20	2	
67	<b>RA50744</b>	A50744	Screw - 8mm-1.25 x 25 Sq HD	2	
68	<b>RET11356</b>	ET11356	Nut - Adjusting	2	
69	<b>R03M7186</b>	03M7186	Bolt - Carriage 8-1.25 x 30mm	2	
70	<b>R24M7036</b>	24M7036	Washer - Flat 8mm Zinc	2	
71	<b>R12M7065</b>	12M7065	Washer - Lock 8mm Zinc	2	

All original equipment manufacturers names and part numbers are used for identification purposes only, and we are in no way implying that our products are original equipment parts. Prices subject to change without notice.