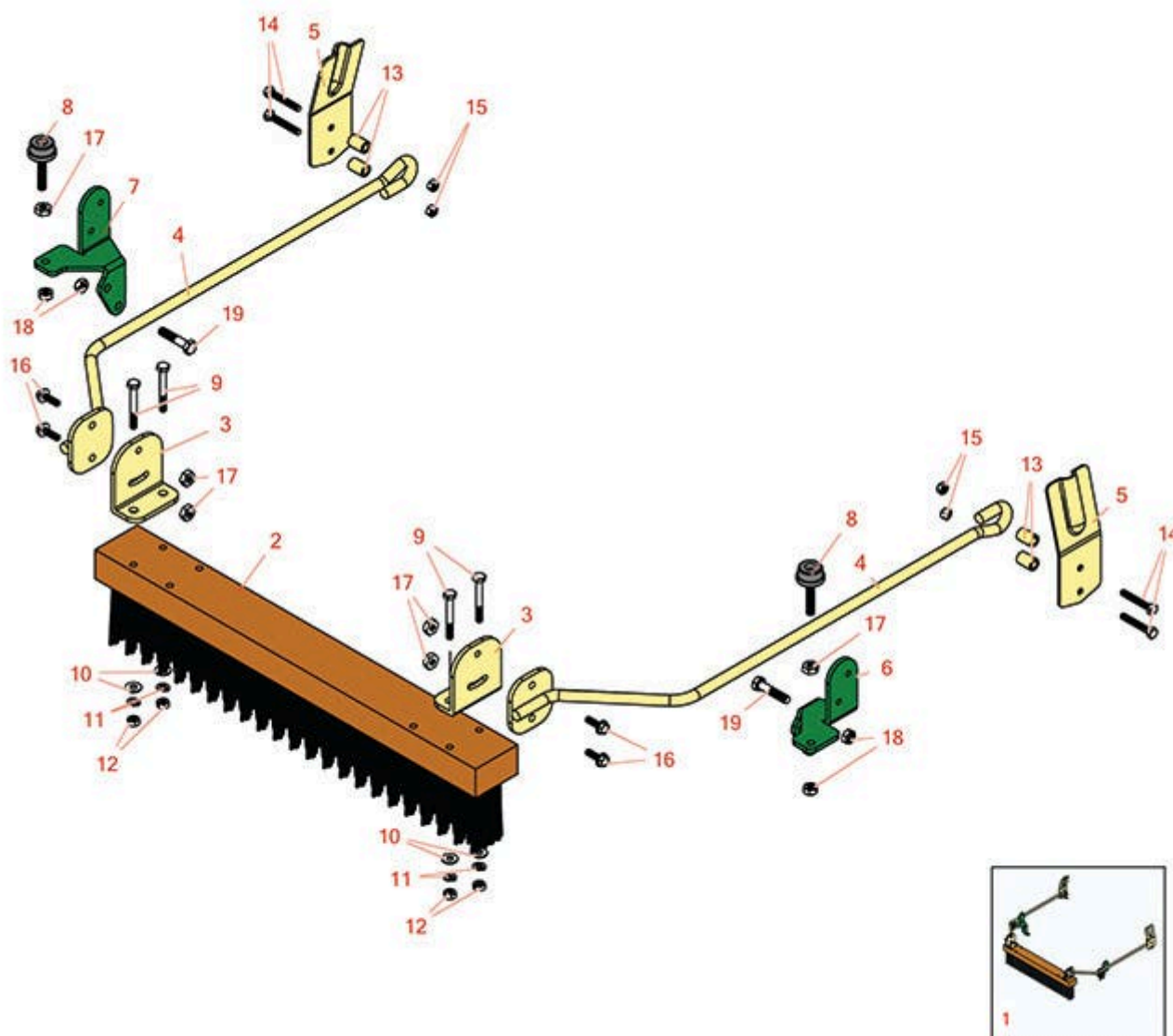




# Replaces John Deere 220 Greens Mower

## Parts

Cutting Unit  
Brush Kit



All original equipment manufacturers names and part numbers are used for identification purposes only, and we are in no way implying that our products are original equipment parts. Prices subject to change without notice.



# Replaces John Deere 220 Greens Mower

## Parts

Cutting Unit  
Brush Kit



Item No	R&R Part No.	OEM Part No.	Description	Qty Req	Order Quantity
1	<b>R120105</b>		Push Brush Kit - Fits 220-220B	1	
<i>Detail Description: Includes 8 ea: R81-0130 Nut; 6 ea: R3296-29 Locknut; 4 ea: R322-42 Bolt, R33103-020 Bolt, R33103-040 Bolt, R400120 Bolt, R453023 Washer, R3253-3 Washer, R443102 Nut, R49-0390 Spacer, R106-8454 Rod Assy, R105-9612 Spring, R32141-36 Screw Adjustment, R150283 Bracket, R443106 Nut; 1 e: R391235 Brush, R120106 LH Bracket, R120107 RH Bracket;</i>					
<b>Other Parts Available</b>					
2	<b>R391235</b>		Brush - 18/22 in Nylon Push	1	
3	<b>R150283</b>		Bracket - Brush - Fits R&R Brush Only	2	
4	<b>R106-8454</b>		Rod Assy - Brush	2	
5	<b>R105-9612</b>		Spring - Brush	2	
6	<b>R120106</b>		Bracket - LH	1	
7	<b>R120107</b>		Bracket - RH	1	
8	<b>R32141-36</b>		Screw Adjustment	2	
9	<b>R400120</b>		Bolt - Hex HD 1/4-20 x 2	4	
10	<b>R453023</b>		Washer - Flat 1/4	4	
11	<b>R3253-3</b>		Washer - Lock 1/4	4	
12	<b>R443102</b>		Nut - 1/4-20 Yellow Zinc	4	
13	<b>R49-0390</b>		Spacer	4	
14	<b>R33103-040</b>		Bolt - Hex Washer M6-1.0 x 40	4	
15	<b>R81-0130</b>		Nut - 6mm-1.0 Flanged Lock Nylon	8	
16	<b>R33103-020</b>		Bolt - Hex Washer M6-1.0 x 20	4	
17	<b>R443106</b>		Nut - 5/16-18 Y/Zinc Plated	2	
18	<b>R3296-29</b>		Locknut - 5/16-18 ESNA	6	

All original equipment manufacturers names and part numbers are used for identification purposes only, and we are in no way implying that our products are original equipment parts. Prices subject to change without notice.



# Replaces John Deere 220 Greens Mower

## Parts

*Cutting Unit  
Brush Kit*



Item No	R&R Part No.	OEM Part No.	Description	Qty Req	Order Quantity
19	R322-42		Bolt - Hex Tap 5/16-18 x 1-1/2	4	

All original equipment manufacturers names and part numbers are used for identification purposes only, and we are in no way implying that our products are original equipment parts. Prices subject to change without notice.