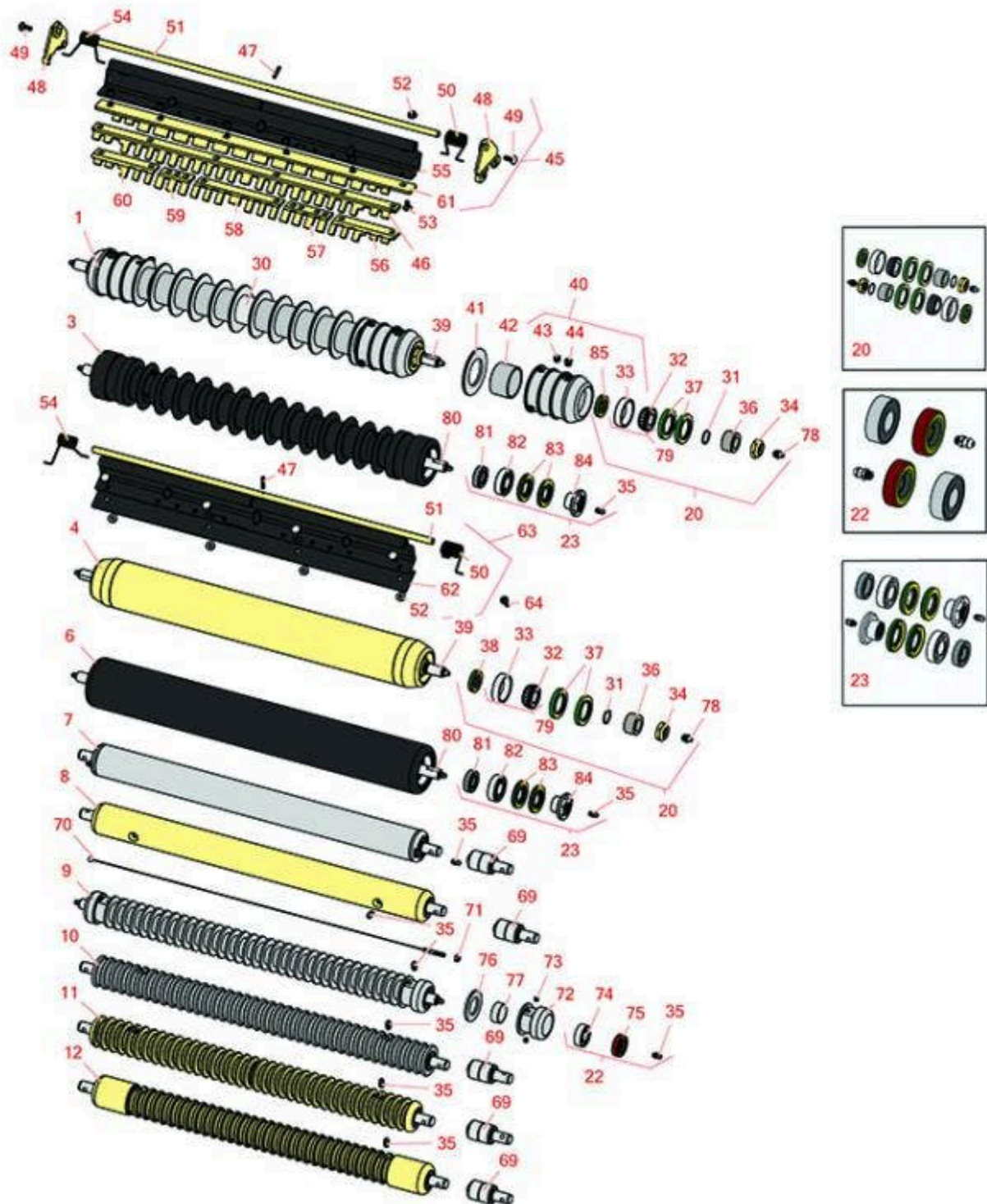




Replaces John Deere 3235B Reel Mower

Parts

Heavy Cutting Unit
Front Rollers



All original equipment manufacturers names and part numbers are used for identification purposes only, and we are in no way implying that our products are original equipment parts. Prices subject to change without notice.



Replaces John Deere 3235B Reel Mower Parts

Heavy Cutting Unit
Front Rollers



Item No	R&R Part No.	OEM Part No.	Description	Qty Req	Order Quantity
---------	--------------	--------------	-------------	---------	----------------

R&R Front Rollers

1	R500512	AMT2966, BM25317	Roller - Grooved Repairable Steel	0	
---	----------------	---------------------	-----------------------------------	---	--

Detail Description: Constructed with a through shaft and greasable ball bearings. This roller can be repaired by unscrewing the ends and replacing the series of washers and spacers.:

3	R1203820	1203752	Roller - Fusion Grooved UHMW Polyethylene	0	
---	-----------------	---------	---	---	--

Detail Description: Fusion Rollers combine the best features of our UHMW plastic rollers with a heavy-duty internal bearing system. Machined from solid UHMW plastic that prevents build-up of debris. This roller has a patented deep groove design and turns on precision stainless ball bearings and double seals for added life:

4	RAET11263	AET11263, AMT2967	Roller - Smooth Tubular Steel	0	
---	------------------	----------------------	-------------------------------	---	--

Detail Description: Constructed with a through shaft, this heavy duty roller uses greasable tapered bearings for extended life.:

6	R1203825		Roller - Fusion Smooth UHMW Polyethylene	0	
---	-----------------	--	--	---	--

Detail Description: Fusion Rollers combine the best features of our UHMW plastic rollers with a heavy-duty internal bearing system. Machined from solid UHMW plastic that prevents build-up of debris. This roller turns on precision stainless ball bearings and double seals for added life.:

7	RAET10111	AET10111, AMT2876	Roller - Smooth Tubular Steel	0	
---	------------------	----------------------	-------------------------------	---	--

Detail Description: This tubular steel roller uses greasable "water-pump" style bearings.:

8	RAMT1442	AMT1442, AMT2878	Roller - Smooth Solid Steel	0	
---	-----------------	---------------------	-----------------------------	---	--

Detail Description: Machined from solid steel, this heavy weight roller uses greasable "water-pump" style bearings.:

9	R68527R		Roller - Grooved Repairable Steel	0	
---	----------------	--	-----------------------------------	---	--

Detail Description: Constructed with a through shaft and greasable ball bearings, this roller can be repaired by unscrewing the ends and replacing the series of washers and spacers.:

All original equipment manufacturers names and part numbers are used for identification purposes only, and we are in no way implying that our products are original equipment parts. Prices subject to change without notice.



Replaces John Deere 3235B Reel Mower

Parts

Heavy Cutting Unit
Front Rollers



Item No	R&R Part No.	OEM Part No.	Description	Qty Req	Order Quantity
10	RAMT1061	AET10557, AMT1061, AMT2877	Roller - Grooved Machined Solid Steel	0	
<i>Detail Description: Machined from solid steel, this heavy weight roller uses greasable "water-pump" style bearings.:</i>					
11	RAET10954	AET10954, AMT2875, AMT2879	Roller - Grooved Machined Solid Steel	0	
<i>Detail Description: Machined from solid steel, this heavy weight roller uses greasable "water-pump" style bearings.:</i>					
12	RAMT1443	AMT1443, AMT2879	Roller - Grooved Machined Solid Steel	0	
<i>Detail Description: Machined from solid steel, this heavy weight roller uses greasable "water-pump" style bearings. Extended length body.:</i>					
Overhaul Kits					
20	RAET10632	AET10632	Overhaul Kit - Roller	0	
<i>Detail Description: Includes 4 ea: RET15755 Seal; 2 ea: R237-54 O-Ring, R253-122 Seal, R254-78 Bearing, R254-79 Cup, R3296-15 Locknut, R471219 Grease Zerk, RET15726 Sleeve, RET15756 Seal:</i>					
22	R100130		Overhaul Kit - Roller	0	
<i>Detail Description: Includes 2 ea.: R302-5 Grease Fittings, R303558 Bearings, & R305115 Seals:</i>					
23	R114-5430		Overhaul Kit - Roller	0	
<i>Detail Description: Includes 4 ea.: R112-7494 Seals; 2 ea.: R302-5 Grease Zerks, R114-3717 Seals, R112-5290 Bearings & R114-3745 Locknuts:</i>					
Other Parts Available					
30	R500513		Tube - Only Grooved Roller	1	
31	R237-54	U46731, U6731	O-Ring - Small	2	

All original equipment manufacturers names and part numbers are used for identification purposes only, and we are in no way implying that our products are original equipment parts. Prices subject to change without notice.



Replaces John Deere 3235B Reel Mower Parts

Heavy Cutting Unit
Front Rollers



Item No	R&R Part No.	OEM Part No.	Description	Qty Req	Order Quantity
32	R254-78	JD8188	Tapered Bearing Cone	2	
33	R254-79	JD8226	Cup - Bearing	2	
<i>Detail Description: Use R254-79M installation mandrel to properly install race.:</i>					
34	R3296-15	N101345	Locknut - 3/4-16 Nylon Jam	2	
35	R302-5	JD7797, JD7842, JD7844	Fitting - Grease	2	
36	RET15726	ET15726, RET15726	Sleeve - Wear Hardened	2	
37	RET15755	ET15755	Seal - Oil	4	
38	RET15756	ET15756, MT1739, MT739	Seal	2	
39	RET17515	ET17515	Shaft - Roller	1	
40	R500511		Roller End - Threaded 3	2	
41	R150673		Washer - 3 Repairable Roller	11	
42	R150676		Spacer - 2-3/4 Dia x 1-1/4 L	10	
43	R150691		Screw - Set Nyloc 3/8-16 x 3/8	4	
44	R170714	E14814	Fitting - Pressure Relief	2	
45	R500559	BM18680, MT18680	Scraper Kit - Grooved Roller	1	
<i>Detail Description: Fits John Deere AET11262 & AMT2966 Grooved Roller Only:</i>					
45	R500573		Scraper Kit - SET/5	1	
<i>Detail Description: Fits R&R R500512 Roller Only & Incl R500572 Scraper:</i>					
46	R500558		Scraper - Grooved Roller	5	

All original equipment manufacturers names and part numbers are used for identification purposes only, and we are in no way implying that our products are original equipment parts. Prices subject to change without notice.



Replaces John Deere 3235B Reel Mower Parts

Heavy Cutting Unit
Front Rollers



Item No	R&R Part No.	OEM Part No.	Description	Qty Req	Order Quantity
<i>Tech Note: Fits OEM Roller Only:</i>					
<i>Detail Description: 1 Piece Scraper fits OEM AET11262 & AMT2966 Grooved Roller:</i>					
47	R34M7010	34M7010	Pin - Spring	5	
48	RMT2407	MT2407	Bracket - Roller Scraper	10	
49	R03M7221	03M7221	Bolt - Carriage M6 x 16	20	
50	RET17629	ET17629	Spring - Torsion LH	5	
51	RET17757	ET11757, ET17757	Pin - Scraper	5	
52	R14M7303	14M7303	Nut - 6mm x 1.0 Flanged	14	
53	R03M7251	03M7251	Bolt - Gr. Roller Scraper	30	
54	RET17630	ET17630	Spring - Torsion RH	5	
55	R500571	MT2369	Bar - Scraper	5	
56	RMT5159	MT5159	Scraper - Fits J.D. LH End	5	
57	RMT2341	MT2341	Section - Grooved Scraper 4 Tooth	5	
58	RMT2340	MT2340	Scraper - Fits J.D. Center	5	
59	RMT2342	MT2342	Section - Grooved Scraper 3 Tooth	5	
60	RMT5158	MT5158	Scraper - Fits J.D. RH End	5	
61	R500572		Scraper - Fits R500512 Only	5	
62	RMT2595	MT2595, MT2895	Scraper Blade - Solid Roller	1	
63	RBM17684	BM17684	Scraper Kit - Solid Roller SET/5	1	

Detail Description: Includes 20 ea: R03M7221 Bolt, R14M7303 Nut; 5 ea: R34M7010 Pin, R500571 Scraper Bar, RET17629 LH Spring, RET17630 RH Spring, RET17757 Pin, RMT2595 Scraper Blade:

All original equipment manufacturers names and part numbers are used for identification purposes only, and we are in no way implying that our products are original equipment parts. Prices subject to change without notice.



Replaces John Deere 3235B Reel Mower Parts

Heavy Cutting Unit
Front Rollers



Item No	R&R Part No.	OEM Part No.	Description	Qty Req	Order Quantity
64	R21M7246	21M7246	Screw	6	
69	RAA35741	AA35741, AET10129, TCA22836	Bearing	2	
<i>Detail Description: 1/4" Side Hole:</i>					
70	RAET10139	AET10139	Cable - Roller Scraper	1	
71	RU45916	14M7298, U45916	Locknut - 10-24 ESNA	2	
72	R150650		Roller End - 2 Repairable	2	
73	R150690		Screw - Set 1/4-20 x 1/4	4	
74	R303558	ET15220	Bearing - Roller	2	
75	R305115	ET15219	Seal - Roller	2	
76	R150652		Washer - 2 Roller	33	
77	R150651		Spacer - 2-3/8 Roller	34	
78	R471219	471219, 471231, JD7759, JD7798	Zerk - Grease	2	
79	R500534		Bearing - with Cup	2	
<i>Detail Description: Kit includes: 1 ea R254-78- Bearing Cone & R254-79 Bearing Cone:</i>					
80	R1203821		Shaft - Fusion Roller	1	
81	R114-3717		Seal	2	
82	R112-5290		Bearing - Stainless	2	
83	R112-7494		Seal	4	
84	R114-3745		Locknut - Bearing - Stainless	2	

All original equipment manufacturers names and part numbers are used for identification purposes only, and we are in no way implying that our products are original equipment parts. Prices subject to change without notice.



Replaces John Deere 3235B Reel Mower Parts

*Heavy Cutting Unit
Front Rollers*



Item No	R&R Part No.	OEM Part No.	Description	Qty Req	Order Quantity
85	R253-122	253-122	Seal	2	

All original equipment manufacturers names and part numbers are used for identification purposes only, and we are in no way implying that our products are original equipment parts. Prices subject to change without notice.