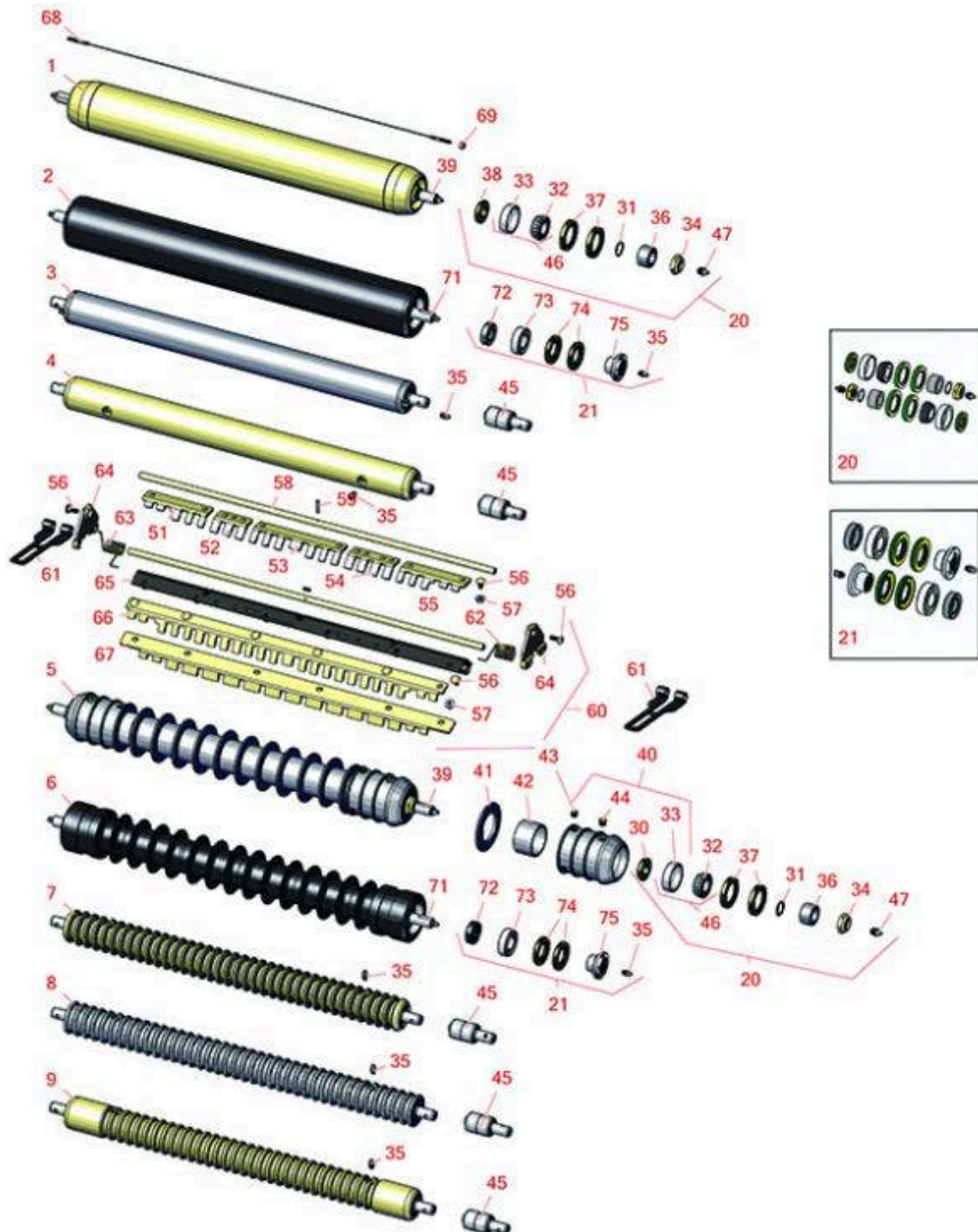




Replaces John Deere 7700 Reel Mower Parts

Cutting Unit - Serial 020001 & Up
Rollers



All original equipment manufacturers names and part numbers are used for identification purposes only, and we are in no way implying that our products are original equipment parts. Prices subject to change without notice.



Replaces John Deere 7700 Reel Mower Parts

Cutting Unit - Serial 020001 & Up
Rollers



Item No	R&R Part No.	OEM Part No.	Description	Qty Req	Order Quantity
---------	--------------	--------------	-------------	---------	----------------

R&R Rollers

1	RAET11263	AET11263, AMT2967	Roller - Smooth Tubular Steel	1	
---	------------------	----------------------	-------------------------------	---	--

Detail Description: Constructed with a through shaft, this heavy duty roller uses greasable tapered bearings for extended life.:

2	R1203825		Roller - Fusion Smooth UHMW Polyethylene	1	
---	-----------------	--	--	---	--

Detail Description: Fusion Rollers combine the best features of our UHMW plastic rollers with a heavy-duty internal bearing system. Machined from solid UHMW plastic that prevents build-up of debris. This roller turns on precision stainless ball bearings and double seals for added life.:

3	RAET10111	AET10111, AMT2876	Roller - Smooth Tubular Steel	1	
---	------------------	----------------------	-------------------------------	---	--

Detail Description: This tubular steel roller uses greasable "water-pump" style bearings.:

4	RAMT1442	AMT1442, AMT2878	Roller - Smooth Solid Steel	1	
---	-----------------	---------------------	-----------------------------	---	--

Detail Description: Machined from solid steel, this heavy weight roller uses greasable "water-pump" style bearings.:

5	R500512	AMT2966, BM25317	Roller - Grooved Repairable Steel	1	
---	----------------	---------------------	-----------------------------------	---	--

Detail Description: Constructed with a through shaft and greasable ball bearings. This roller can be repaired by unscrewing the ends and replacing the series of washers and spacers.:

6	R1203820	1203752	Roller - Fusion Grooved UHMW Polyethylene	1	
---	-----------------	---------	---	---	--

Detail Description: Fusion Rollers combine the best features of our UHMW plastic rollers with a heavy-duty internal bearing system. Machined from solid UHMW plastic that prevents build-up of debris. This roller has a patented deep groove design and turns on precision stainless ball bearings and double seals for added life:

7	RAET10954	AET10954, AMT2875, AMT2879	Roller - Grooved Machined Solid Steel	1	
---	------------------	----------------------------------	---------------------------------------	---	--

All original equipment manufacturers names and part numbers are used for identification purposes only, and we are in no way implying that our products are original equipment parts. Prices subject to change without notice.



Replaces John Deere 7700 Reel Mower Parts

Cutting Unit - Serial 020001 & Up
Rollers



Item No	R&R Part No.	OEM Part No.	Description	Qty Req	Order Quantity
---------	--------------	--------------	-------------	---------	----------------

Detail Description: Machined from solid steel, this heavy weight roller uses greasable "water-pump" style bearings.:

8	RAMT1061	AET10557, AMT1061, AMT2877	Roller - Grooved Machined Solid Steel	1	
---	-----------------	----------------------------------	---------------------------------------	---	--

Detail Description: Machined from solid steel, this heavy weight roller uses greasable "water-pump" style bearings.:

9	RAMT1443	AMT1443, AMT2879	Roller - Grooved Machined Solid Steel	1	
---	-----------------	---------------------	---------------------------------------	---	--

Detail Description: Machined from solid steel, this heavy weight roller uses greasable "water-pump" style bearings. Extended length body.:

Overhaul Kits

20	RAET10632	AET10632	Overhaul Kit - Roller	1	
----	------------------	----------	-----------------------	---	--

Detail Description: Includes 4 ea: RET15755 Seal; 2 ea: R237-54 O-Ring, R253-122 Seal, R254-78 Bearing, R254-79 Cup, R3296-15 Locknut, R471219 Grease Zerk, RET15726 Sleeve, RET15756 Seal:

21	R114-5430		Overhaul Kit - Roller	1	
----	------------------	--	-----------------------	---	--

Detail Description: Includes 4 ea.: R112-7494 Seals; 2 ea.: R302-5 Grease Zerks, R114-3717 Seals, R112-5290 Bearings & R114-3745 Locknuts:

Other Parts Available

30	R253-122	253-122	Seal	2	
----	-----------------	---------	------	---	--

31	R237-54	U46731, U6731	O-Ring - Small	2	
----	----------------	------------------	----------------	---	--

32	R254-78	JD8188	Tapered Bearing Cone	2	
----	----------------	--------	----------------------	---	--

33	R254-79	JD8226	Cup - Bearing	2	
----	----------------	--------	---------------	---	--

Detail Description: Use R254-79M installation mandrel to properly install race.:

34	R3296-15	N101345	Locknut - 3/4-16 Nylon Jam	2	
----	-----------------	---------	----------------------------	---	--

All original equipment manufacturers names and part numbers are used for identification purposes only, and we are in no way implying that our products are original equipment parts. Prices subject to change without notice.



Replaces John Deere 7700 Reel Mower Parts

Cutting Unit - Serial 020001 & Up
Rollers



Item No	R&R Part No.	OEM Part No.	Description	Qty Req	Order Quantity
35	R302-5	JD7797, JD7842, JD7844	Fitting - Grease	2	
36	RET15726	ET15726, RET15726	Sleeve - Wear Hardened	2	
37	RET15755	ET15755	Seal - Oil	4	
38	RET15756	ET15756, MT1739, MT739	Seal	2	
39	RET17515	ET17515	Shaft - Roller	1	
40	R500511		Roller End - Threaded 3	2	
41	R150673		Washer - 3 Repairable Roller	11	
42	R150676		Spacer - 2-3/4 Dia x 1-1/4 L	10	
43	R150690		Screw - Set 1/4-20 x 1/4	4	
44	R170714	E14814	Fitting - Pressure Relief	2	
45	RAA35741	AA35741, AET10129, TCA22836	Bearing	2	
<i>Detail Description: 1/4" Side Hole:</i>					
46	R500534		Bearing - with Cup	2	
<i>Detail Description: Kit includes: 1 ea R254-78- Bearing Cone & R254-79 Bearing Cone:</i>					
47	R471219	471219, 471231, JD7759, JD7798	Zerk - Grease	2	
51	RMT5158	MT5158	Scraper - Fits J.D. RH End	1	
52	RMT2342	MT2342	Section - Grooved Scraper 3 Tooth	1	

All original equipment manufacturers names and part numbers are used for identification purposes only, and we are in no way implying that our products are original equipment parts. Prices subject to change without notice.



Replaces John Deere 7700 Reel Mower Parts

Cutting Unit - Serial 020001 & Up
Rollers



Item No	R&R Part No.	OEM Part No.	Description	Qty Req	Order Quantity
53	RMT2340	MT2340	Scraper - Fits J.D. Center	1	
54	RMT2341	MT2341	Section - Grooved Scraper 4 Tooth	1	
55	RMT5159	MT5159	Scraper - Fits J.D. LH End	1	
56	R03M7221	03M7221	Bolt - Carriage M6 x 16	10	
57	R14M7303	14M7303	Nut - 6mm x 1.0 Flanged	10	
58	RET17757	ET11757, ET17757	Pin - Scraper	1	
59	R34M7010	34M7010	Pin - Spring	1	
60	R500559	BM18680, MT18680	Scraper Kit - Grooved Roller	1	
<i>Detail Description: Fits John Deere AET11262 & AMT2966 Grooved Roller Only:</i>					
61	RTC26998	TCU26998	Panel	2	
60	R500573		Scraper Kit - SET/5	1	
<i>Detail Description: Fits R&R R500512 Roller Only & Incl R500572 Scraper:</i>					
62	RET17629	ET17629	Spring - Torsion LH	1	
63	RET17630	ET17630	Spring - Torsion RH	1	
64	RMT2407	MT2407	Bracket - Roller Scraper	2	
65	R500571	MT2369	Bar - Scraper	1	
66	R500558		Scraper - Grooved Roller	1	
<i>Detail Description: 1 Piece Scraper fits OEM AET11262 & AMT2966 Grooved Roller:</i>					
67	R500572		Scraper - Fits R500512 Only	1	
68	RTCA19566	TCA19566	Cable - Smooth Roller Scraper	1	

All original equipment manufacturers names and part numbers are used for identification purposes only, and we are in no way implying that our products are original equipment parts. Prices subject to change without notice.



Replaces John Deere 7700 Reel Mower Parts

*Cutting Unit - Serial 020001 & Up
Rollers*



Item No	R&R Part No.	OEM Part No.	Description	Qty Req	Order Quantity
69	RU45916	14M7298, U45916	Locknut - 10-24 ESNA	2	
71	R1203821		Shaft - Fusion Roller	1	
72	R114-3717		Seal	2	
73	R112-5290		Bearing - Stainless	2	
74	R112-7494		Seal	4	
75	R114-3745		Locknut - Bearing - Stainless	2	

All original equipment manufacturers names and part numbers are used for identification purposes only, and we are in no way implying that our products are original equipment parts. Prices subject to change without notice.