

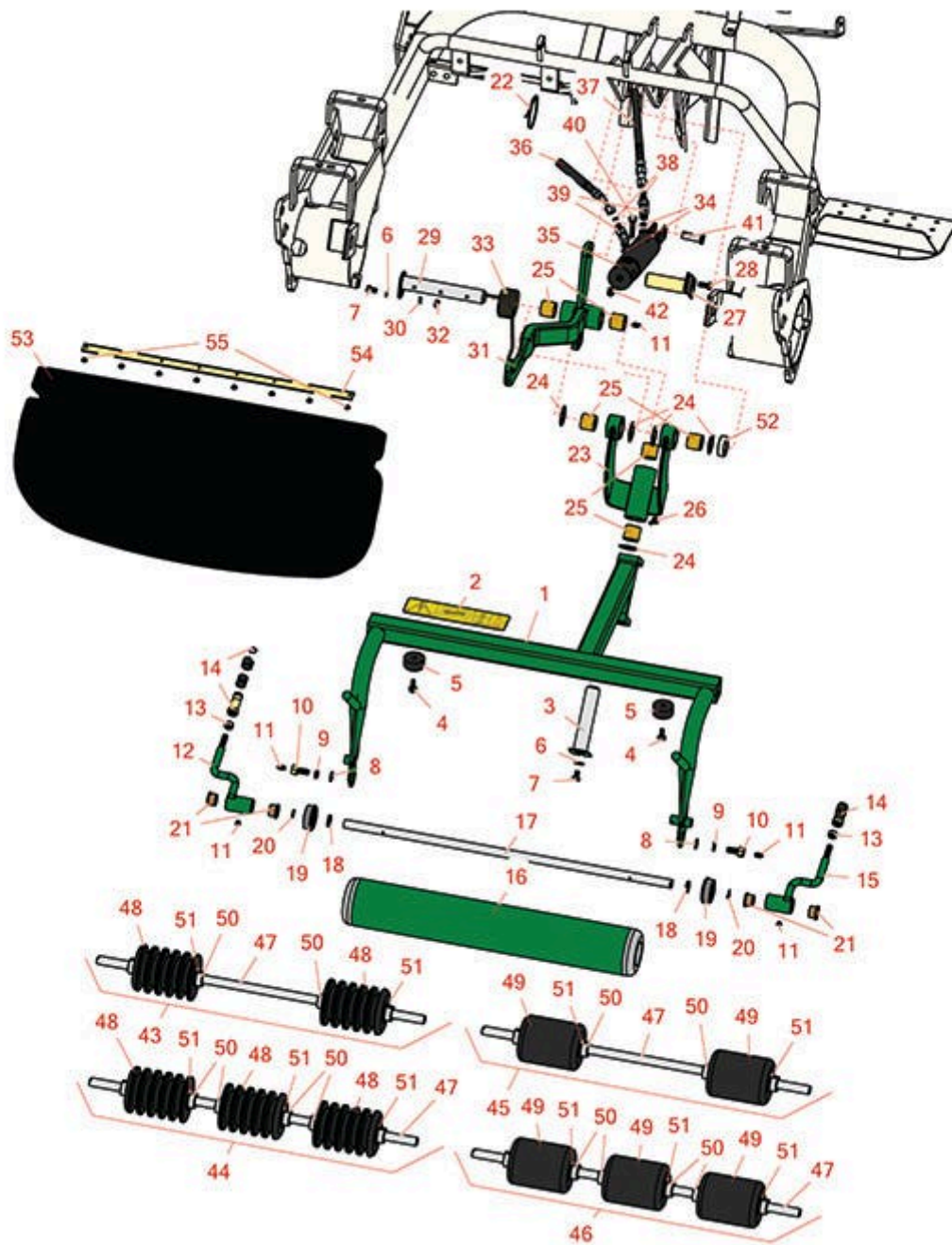


Replaces R&R Products Versa-Green

2160D Parts

Traction Unit

Rear Pull Frame



All original equipment manufacturers names and part numbers are used for identification purposes only, and we are in no way implying that our products are original equipment parts. Prices subject to change without notice.



Replaces R&R Products Versa-Green

2160D Parts

Traction Unit

Rear Pull Frame



| Item No | R&R Part No. | OEM Part No. | Description | Qty Req | Order Quantity |
|---------|------------------|--|--------------------------------|---------|----------------|
| 1 | R92-9177G | | Frame - Pull RH - Green | 1 | |
| 2 | R93-8064 | | Decal - Warning | 1 | |
| 3 | R10-6090G | | Pin - Pivot 4-7/8 Long - Green | 1 | |
| 4 | R49-2040 | R32104-42, R32104-95, R32144-44 | Bolt - Hex Washer 1/4-20 x 3/4 | 2 | |
| 5 | R94-4548 | | Rubber Bumper | 2 | |
| 6 | R453009 | 3256-3, R01-166-0400, R24-10-BD, R24-9-AD, R24H1136, R32-9650, R3256-2, R3256-23, R3256-67, R3290-217, R3556-3, R4-2390, R452006, R7-0152 | Washer - Flat 5/16 SAE | 3 | |
| 7 | R322-1 | R01-178-0504, R20-22-AD, R20-22-AGD, R513337, RB310801 | Bolt - Hex HD 5/16-18 x 1/2 | 2 | |

All original equipment manufacturers names and part numbers are used for identification purposes only, and we are in no way implying that our products are original equipment parts. Prices subject to change without notice.



Replaces R&R Products Versa-Green

2160D Parts

Traction Unit

Rear Pull Frame



| Item No | R&R Part No. | OEM Part No. | Description | Qty Req | Order Quantity |
|---------|-----------------|---|------------------------------|---------|----------------|
| 8 | R453011 | 3256-24, 453011, R01-166-0100, R01-166-0120, R01-166-0270, R01-166-0500, R01-166-0600, R01-166-0620, R132-4593, R237-12, R24-10-AD, R24-11-AD, R24-11-BD, R24-12-AD, R24-12-BD, R30-9310, R32-8190, R3256-24, R3256-3, R3256-36, R3256-4, R47-9950 | Washer - Flat 3/8 SAE Y/Zinc | 2 | |
| 9 | R3253-21 | 3253-21, R215-51, R30-8470, R7-1912, RMT3949 | Washer - Lock 3/8 | 2 | |
| 10 | R11-0160 | | Screw - Roller Shaft | 2 | |

All original equipment manufacturers names and part numbers are used for identification purposes only, and we are in no way implying that our products are original equipment parts. Prices subject to change without notice.



Replaces R&R Products Versa-Green

2160D Parts

Traction Unit

Rear Pull Frame



| Item No | R&R Part No. | OEM Part No. | Description | Qty Req | Order Quantity |
|---------|------------------|--|--------------------------------|---------|----------------|
| 11 | R302-5 | R173-0, R21-6010, R255825, R302-37, R302-47, R302-57, R302-58, R302-6, R31-0300, R32-9660, R471214, R471223, R471226, R60-0800, R62-3880, R92-4181, RJD7797, RJD7842, RJD7844, RM0004, RZS48114-04 | Fitting - Grease | 5 | |
| 12 | R92-0586G | | Arm - Pull LH - Green | 1 | |
| 13 | R3220-3 | R01-191-0624, R3290-149 | Nut - Jam Ball Joint | 2 | |
| 14 | R99-1460 | R2411-28, R2411-29, R2411-30, R2411-6, R2411-8, R8-7710, R94-2959 | Receiver - Ball Joint | 2 | |
| 15 | R92-0585G | | Arm - Pull RH - Green | 1 | |
| 16 | R99-4277G | | Basket Roller - Smooth - Green | 1 | |
| 17 | R21-8470 | | Shaft - Roller | 1 | |
| 18 | R253-83 | | Seal - Oil 7/8 OD x 5/8 ID | 2 | |
| 19 | R251-141 | | Bearing - Roller | 2 | |
| 20 | R3290-317 | | Washer - Wave | 2 | |

All original equipment manufacturers names and part numbers are used for identification purposes only, and we are in no way implying that our products are original equipment parts. Prices subject to change without notice.



Replaces R&R Products Versa-Green

2160D Parts

Traction Unit

Rear Pull Frame



| Item No | R&R Part No. | OEM Part No. | Description | Qty Req | Order Quantity |
|--|-------------------|--|-----------------------------------|---------|----------------|
| 21 | R3-1506 | R256-287, R3709088, R4-4550, R75-2160, R9329 | Bushing - Bronze | 4 | |
| 22 | R3M41933 | | Cable Ties - 6" Bulk Pkg/100 | 1 | |
| <i>Detail Description: 3M Cable Ties are molded from 6/6 nylon and are available in a variety of sizes and styles, including weather-resistant black for outdoor use.:</i> | | | | | |
| 23 | R105-0452G | | Pivot Hinge Assy - Center - Green | 1 | |
| 24 | R10-8110 | | Washer - Pivot Pin | 6 | |
| 25 | R3-0348 | R324124, R342124 | Bushing | 4 | |
| 26 | R302-60 | | Zerk - Grease 90 Deg. | 1 | |
| 27 | R68-5560 | | Pivot Pin - Cylinder | 1 | |
| 28 | R322-3 | R01-150-1420, R01-178-0506, R09109, R20-24-AD, R20-24-AGD, R48-9270, R513339, R908017P, RB311201 | Bolt - Hex HD 5/16-18 x 3/4 | 1 | |
| 29 | R27-2550G | | Pin - Hinge 6-5/8 Long - Green | 1 | |

All original equipment manufacturers names and part numbers are used for identification purposes only, and we are in no way implying that our products are original equipment parts. Prices subject to change without notice.



Replaces R&R Products Versa-Green

2160D Parts

Traction Unit

Rear Pull Frame



| Item No | R&R Part No. | OEM Part No. | Description | Qty Req | Order Quantity |
|---------|--------------|--|--|---------|----------------|
| 30 | R3253-4 | R01-166-0110, R01-166-0510, R09053, R23-10-GD, R24-7170, R30-8520, R42-9850, R48-9350, R48-9360, R48-9570, R68-9420, R99-7577 | Washer - Lock 5/16 Zinc | 1 | |
| 31 | R110-3955 | | Lift Arm Assy - Center | 1 | |
| 32 | R3296-29 | 3296-29, R1-804256, R915662P | Locknut - 5/16-18 ESNA | 1 | |
| 33 | R110-3953 | R106-9080 | Spring - Torsion - Center | 1 | |
| 34 | R237-22 | R107-8844, R232-72, R237-78 | O-Ring | 2 | |
| 35 | R106-9064 | | Hydraulic Cylinder - Center | 1 | |
| 35 | R107-2563 | | Seal Kit | 1 | |
| 36 | R150637 | | Hose - Rear Lift Cyl | 1 | |
| 37 | R150639 | | Hydraulic Hose Assy - Rear Lift Cylinder | 1 | |
| 38 | R237-21 | | O-Ring | 2 | |
| 39 | R340-103 | R340-137 | Hydraulic Fitting - 45 Deg | 2 | |
| 40 | R3272-11 | R01-151-0010, R01-151-0040, R28-18-D, R28-28-D, R3211-72 | Pin - Cotter | 1 | |

All original equipment manufacturers names and part numbers are used for identification purposes only, and we are in no way implying that our products are original equipment parts. Prices subject to change without notice.



Replaces R&R Products Versa-Green

2160D Parts

Traction Unit

Rear Pull Frame



| Item No | R&R Part No. | OEM Part No. | Description | Qty Req | Order Quantity |
|--|------------------|-----------------------|---|---------|----------------|
| 41 | R283-8 | R17-3670, R7-2035 | Clevis Pin - 1/2 x 1-27/64 | 1 | |
| 42 | R700415 | | Zerk - Grease 1/8 PTF 45 Deg | 1 | |
| 43 | R150325 | | Basket Roller - Grooved UHMW Polyethylene 2 Section | 1 | |
| 44 | R150329 | | Basket Roller - Grooved UHMW Polyethylene 3 Section | 1 | |
| 45 | R150330 | | Basket Roller - Smooth UHMW Polyethylene 2 Section | 1 | |
| 46 | R150332 | | Roller - Smooth UHMW Polyethylene 3-1/2 3 Sec | 1 | |
| 47 | R150326 | | Shaft - Stainless Roller | 1 | |
| 48 | R150327 | | Roller Section - 3.5 UHMW Grooved | 0 | |
| 49 | R150331 | | Section - 3-1/2 UHMW Smooth | 0 | |
| 50 | R150328 | R3709875, R94-9213 | Collar - Retaining 5/8 | 0 | |
| 51 | R302295 | | Washer | 0 | |
| 52 | R93-2384 | | Spacer - Carrier Frame | 1 | |
| 53 | R150257 | | Grass Basket Assembly | 1 | |
| <i>Detail Description: Please note: Due to excessive air freight charges, this item will be shipped ground freight.:</i> | | | | | |
| 54 | R104-2607 | | Strip - Reinforcing Grass Basket | 1 | |
| 55 | R3290-382 | R3269-15 | Rivet - 5/32 x 1/2 Pop Rivet | 8 | |

All original equipment manufacturers names and part numbers are used for identification purposes only, and we are in no way implying that our products are original equipment parts. Prices subject to change without notice.