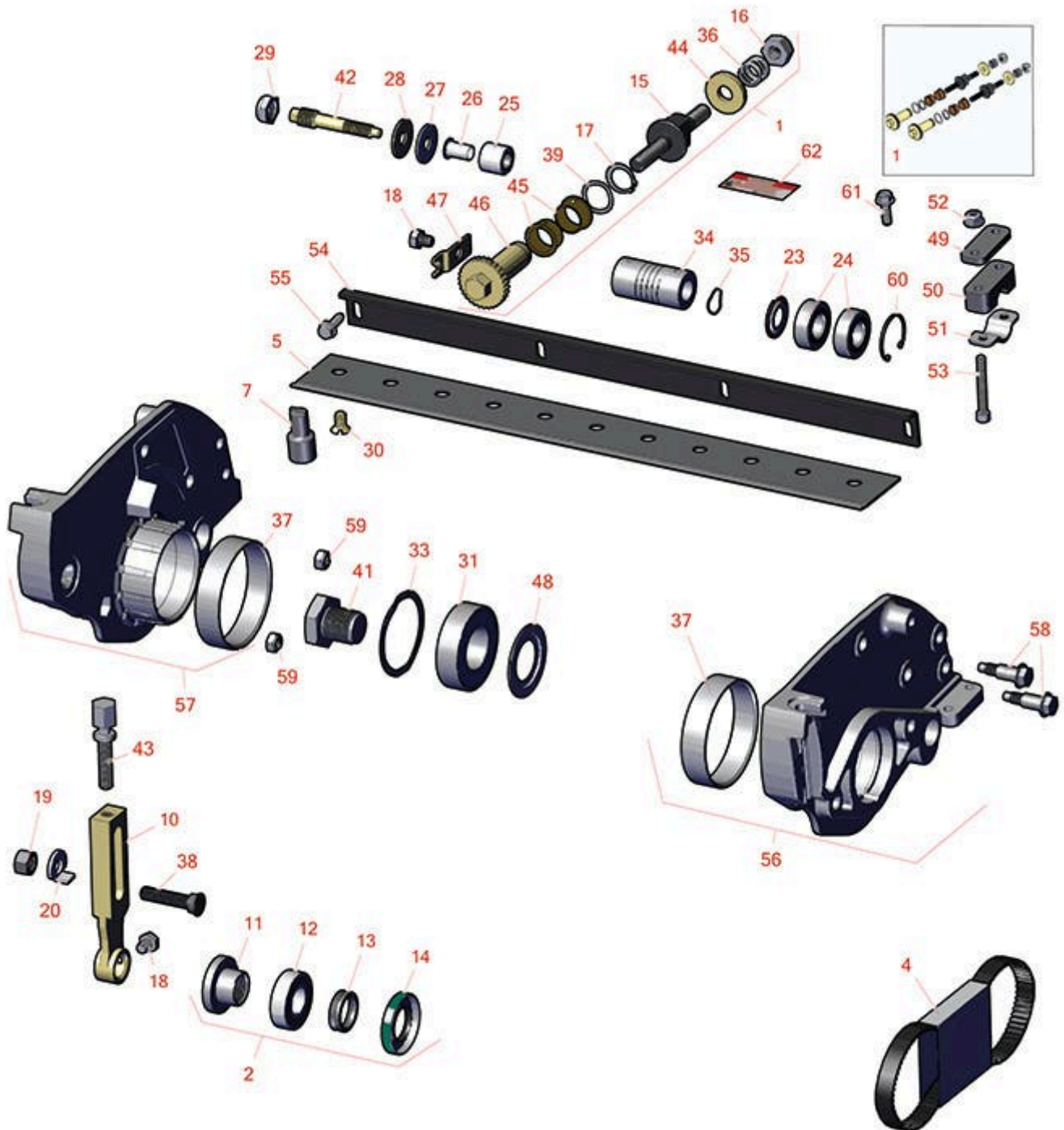




# Replaces Toro Greensmaster eFlex 1800 Parts

DPA Cutting Unit - Model 04253 & 04254  
Reel & Bedknife



All original equipment manufacturers names and part numbers are used for identification purposes only, and we are in no way implying that our products are original equipment parts. Prices subject to change without notice.



# Replaces Toro Greensmaster eFlex 1800 Parts

DPA Cutting Unit - Model 04253 & 04254  
Reel & Bedknife



Item No	R&R Part No.	OEM Part No.	Description	Qty Req	Order Quantity
---------	--------------	--------------	-------------	---------	----------------

## Overhaul kit

1	<b>R121-2637</b>	121-2637	Overhaul Kit - DPA Adjusters	1	
2	<b>R107-1594</b>	107-1594	Overhaul Kit - Roller	1	
<i>Detail Description: Includes 2 ea.: R106-6941 Seals, R106-6942 V-Rings &amp; R251-347 Bearings:</i>					

## Belt

4	<b>R99-2022</b>	99-2022	Belt - Reel Drive	1	
---	-----------------	---------	-------------------	---	--

## R&R Bedknives, Lifetime Guaranteed

5	<b>R98-7260</b>	98-7260, 98-7260-05	Bedknife - Tournament .125 - .500 HOC	1	
---	-----------------	------------------------	---------------------------------------	---	--

*Detail Description: R&R Bedknives are manufactured from high carbon-boron alloy steel and then hardened to RC46-49 to match the temper of our reel blades and original equipment reels. Bedknives are surface ground on the top and front edge and straightened three times before being packaged with oil for rust prevention. All R&R Bedknives now have an increased front edge grind for added life. All R&R Bedknives are guaranteed against defects in material and workmanship under normal use for the life of the part.:*

5	<b>R98-7261</b>	98-7261	Bedknife - Micro Cut .062 - .187 HOC	1	
---	-----------------	---------	--------------------------------------	---	--

*Detail Description: R&R Bedknives are manufactured from high carbon-boron alloy steel and then hardened to RC46-49 to match the temper of our reel blades and original equipment reels. Bedknives are surface ground on the top and front edge and straightened three times before being packaged with oil for rust prevention. All R&R Bedknives now have an increased front edge grind for added life. All R&R Bedknives are guaranteed against defects in material and workmanship under normal use for the life of the part.:*

5	<b>R110-2301</b>	110-2301	Bedknife - Low Cut .187 - 1.00 HOC	1	
---	------------------	----------	------------------------------------	---	--

*Detail Description: R&R Bedknives are manufactured from high carbon-boron alloy steel and then hardened to RC46-49 to match the temper of our reel blades and original equipment reels. Bedknives are surface ground on the top and front edge and straightened three times before being packaged with oil for rust prevention. All R&R Bedknives now have an increased front edge grind for added life. All R&R Bedknives are guaranteed against defects in material and workmanship under normal use for the life of the part.:*

All original equipment manufacturers names and part numbers are used for identification purposes only, and we are in no way implying that our products are original equipment parts. Prices subject to change without notice.



# Replaces Toro Greensmaster eFlex 1800 Parts

DPA Cutting Unit - Model 04253 & 04254  
Reel & Bedknife



Item No	R&R Part No.	OEM Part No.	Description	Qty Req	Order Quantity
5	<b>R110-2300</b>	110-2300	Bedknife - Micro Cut Extended .062 - .187 HOC	1	

*Detail Description: R&R Bedknives are manufactured from high carbon-boron alloy steel and then hardened to RC46-49 to match the temper of our reel blades and original equipment reels. Bedknives are surface ground on the top and front edge and straightened three times before being packaged with oil for rust prevention. All R&R Bedknives now have an increased front edge grind for added life. All R&R Bedknives are guaranteed against defects in material and workmanship under normal use for the life of the part.:*

## R&R Razor Tool Steel Bedknives

5	<b>R117-1530</b>	117-1530	Bedknife - Razor Tool Steel - 18 Micro Cut .062 - .187 HOC	1	
---	------------------	----------	--	---	--

*Detail Description: R&R Razor bedknives are manufactured from premium alloy tool steel steel and then hardened to RC48-51 to match the temper of our Razor reel blades and original equipment premium series reels. Bedknives are surface ground on the top and front edge and specially packaged for rust prevention. All R&R Bedknives now have an increased front edge grind for added life. All R&R Bedknives are guaranteed against defects in material and workmanship under normal use for the life of the part. You can expect up to double the life over standard bedknives.:*

5	<b>R117-1532</b>	117-1532	Bedknife - Razor Tool Steel - Tournament .125 - .500 HOC	1	
---	------------------	----------	--	---	--

*Detail Description: R&R Razor bedknives are manufactured from premium alloy tool steel steel and then hardened to RC48-51 to match the temper of our Razor reel blades and original equipment premium series reels. Bedknives are surface ground on the top and front edge and specially packaged for rust prevention. All R&R Bedknives now have an increased front edge grind for added life. All R&R Bedknives are guaranteed against defects in material and workmanship under normal use for the life of the part. You can expect up to double the life over standard bedknives.:*

## Service Tools

7	<b>R51-0880</b>	51-0880	Bedknife Screw Driver Tool	0	
---	-----------------	---------	----------------------------	---	--

*Detail Description: Easily install and remove bed knife screws with the help of a ratchet with 3/8" drive. Tool manufactured with hardened alloy steel.:*

## Other Parts Available

10	<b>R115-7041</b>	115-7041	Bracket - Front Roller 5 1/4 in	2	
----	------------------	----------	---------------------------------	---	--

All original equipment manufacturers names and part numbers are used for identification purposes only, and we are in no way implying that our products are original equipment parts. Prices subject to change without notice.



# Replaces Toro Greensmaster eFlex 1800 Parts

*DPA Cutting Unit - Model 04253 & 04254  
Reel & Bedknife*



Item No	R&R Part No.	OEM Part No.	Description	Qty Req	Order Quantity
11	R114-3745	106-6939, 108-3151, 114-3745, 114-5411	Locknut - Bearing - Stainless	2	
12	R251-347	251-347, 72-5690	Bearing - Ball	2	
13	R106-6942	106-6942	V-Ring - Roller	2	
14	R106-6941	106-6941	Seal - Double Lip	2	
15	R115-7039	115-7039	Screw - Adjuster - Bedbar	2	
16	R3296-48	119-4039, 32146-7, 3296-34, 3296-48	Locknut - 7/16-14 ESNA	2	
17	R32120-93	32120-93	Snap Ring - HD	2	
18	R114-9396	114-9396, 119-4067	Bolt - Hex HD 5/16-18 x 3/8	4	
19	R115-7193	115-7193	Nut-HOC	2	
20	R104-2603	104-2603, 119-4158	Washer - HOC Bracket	2	
23	R115-6923	115-6923	Shield - Bearing - Flocked	1	
24	R115-6869	115-6869	Bearing - Ball -Stainless	2	
25	R119-4153	119-4153	Bushing - Rubber	2	
26	R52-2890	52-2890	Bushing - Flanged	2	
27	R52-2900	52-2900	Washer - Nylon	4	
28	R52-2860	119-4150, 52-2860	Washer - Bed Bar Pivot	4	

All original equipment manufacturers names and part numbers are used for identification purposes only, and we are in no way implying that our products are original equipment parts. Prices subject to change without notice.



# Replaces Toro Greensmaster eFlex 1800 Parts

*DPA Cutting Unit - Model 04253 & 04254  
Reel & Bedknife*



Item No	R&R Part No.	OEM Part No.	Description	Qty Req	Order Quantity
29	R3296-28	119-4154, 140-9234, 32127-34, 32128-7, 32128-8, 32136-7, 3296-28	Nut - 1/2-20 ESNA Jam	2	
30	R119-4151	119-4151	Screw - Bedknife 5/16-18 x 17/32	11	
31	R115-3296	115-3296	Bearing	2	
33	R105-5700	105-5700, 115-5258	Wave Washer - Bearing	1	
34	R115-6867	115-6867	Coupling - Flex	1	
35	R115-7143	115-7143	Spring - Wave	1	
36	R119-4156	119-4156	Spring - Compression	2	
37	R117-6619	117-6619	Bushing	2	
38	R99-3773	99-3773	Bolt- Plow 3/8-16 x 1 3/4	2	
39	R119-4164	119-4164	Washer - Wave	2	
41	R115-7263	115-7263	Bolt - Bearing Lock	1	
42	R117-9493	117-9493	Bolt - Bed Bar - Hardened	2	
43	R110-7352	110-7352	Screw - HOC 2 5/8 Stainless	2	
44	R119-4155	119-4155	Washer - Hardened	2	
45	R106-5344	106-5344	Bushing - Flanged and Keyed	4	
46	R106-5363	106-5363	Shaft - Adjusting - Bed Bar - Stainless	2	
47	R99-2097	99-2097	Detent - Bed Bar Adjuster	2	
48	R115-3299	115-3299	Seal- Flocked	2	

All original equipment manufacturers names and part numbers are used for identification purposes only, and we are in no way implying that our products are original equipment parts. Prices subject to change without notice.



# Replaces Toro Greensmaster eFlex 1800 Parts

*DPA Cutting Unit - Model 04253 & 04254  
Reel & Bedknife*



Item No	R&R Part No.	OEM Part No.	Description	Qty Req	Order Quantity
49	<b>R105-5711</b>	105-5711, 119-4165	Shim - Roller	6	
50	<b>R105-5710</b>	105-5710, 119-4166	Spacer - Roller	2	
51	<b>R105-5712</b>	105-5712, 119-4157	Retainer - Roller	2	
52	<b>R119-4040</b>	119-4040	Nut - 1/4-20 Fl Locknut	4	
53	<b>R119-4035</b>	119-4035	Bolt - 1/4-20 x 1 3/4 Soc HD Cap Scr	4	
54	<b>R119-4066-03</b>	119-4066-03	Cutoff Bar	1	
55	<b>R131-6150</b>	131-6150	Screw- 1/4-20 x 3/4 Hx Wh Thread Forming	4	
56	<b>R119-4005</b>	119-4005	Side Plate Assy-LH Incl R117-6619	1	
57	<b>R119-4007</b>	119-4007	Side Plate Assy-RH Incl R117-6619	1	
58	<b>R115-7042</b>	115-7042	Bolt-Shoulder, Flange	4	
59	<b>R3296-29</b>	1-804256, 3290-357, 3296-29, 915662P	Locknut - 5/16-18 ESNA	2	
59	<b>R32153-3</b>	119-4038, 22-12-AJFD, 32127-35, 32146-5, 32153-3, 3296-18, 3296-29, 3296-31, N/A	Locknut - 5/16-18 ESNA Zinc	2	
60	<b>R458461</b>	32151-34	Snap Ring	1	

All original equipment manufacturers names and part numbers are used for identification purposes only, and we are in no way implying that our products are original equipment parts. Prices subject to change without notice.



# Replaces Toro Greensmaster eFlex 1800 Parts

*DPA Cutting Unit - Model 04253 & 04254  
Reel & Bedknife*



Item No	R&R Part No.	OEM Part No.	Description	Qty Req	Order Quantity
61	R119-4012	119-4012	Screw - Hx Washer HD Self Threading	3	
62	R354083	104-7729, 354083	Decal - Danger	1	

All original equipment manufacturers names and part numbers are used for identification purposes only, and we are in no way implying that our products are original equipment parts. Prices subject to change without notice.