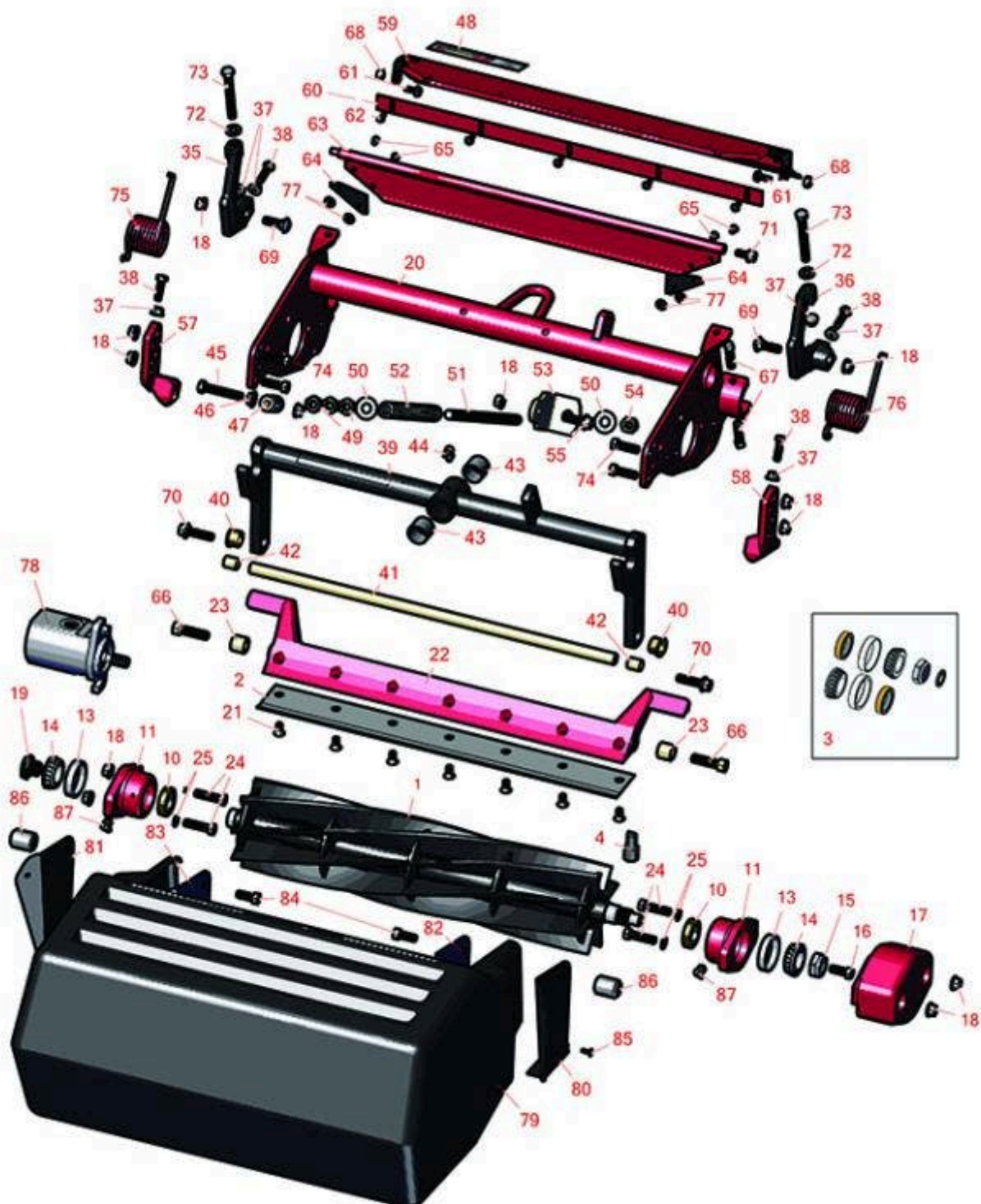




Replaces Toro Reelmaster 5400D Parts

Cutting Unit - Model 03527 & 03528

Reel & Bedknife



All original equipment manufacturers names and part numbers are used for identification purposes only, and we are in no way implying that our products are original equipment parts. Prices subject to change without notice.



Replaces Toro Reelmaster 5400D Parts

Cutting Unit - Model 03527 & 03528

Reel & Bedknife



Item No	R&R Part No.	OEM Part No.	Description	Qty Req	Order Quantity
---------	--------------	--------------	-------------	---------	----------------

R&R Reels, Lifetime Guaranteed

1	R14-0659	14-0659, 57-5300	Reel - 5 Blade Heavy Duty	1	
---	-----------------	---------------------	---------------------------	---	--

Detail Description: R&R Reel blades are expertly crafted from premium high carbon-boron alloy steel, heat-treated to perfectly complement both R&R and OEM bedknives. Each reel undergoes precision cylindrical grinding on bearing surfaces, followed by relief grinding for optimal performance. Advanced computer balancing ensures extended reel and bearing life. Backed by our lifetime guarantee against defects in materials and craftsmanship under normal use, R&R Reels deliver unmatched durability and cutting precision you can trust.:

1	R14-0649	14-0649	Reel - 8 Blade Heavy Duty	1	
---	-----------------	---------	---------------------------	---	--

Detail Description: R&R Reel blades are expertly crafted from premium high carbon-boron alloy steel, heat-treated to perfectly complement both R&R and OEM bedknives. Each reel undergoes precision cylindrical grinding on bearing surfaces, followed by relief grinding for optimal performance. Advanced computer balancing ensures extended reel and bearing life. Backed by our lifetime guarantee against defects in materials and craftsmanship under normal use, R&R Reels deliver unmatched durability and cutting precision you can trust.:

R&R Bedknives, Lifetime Guaranteed

2	R100-3350	100-3350	Bedknife - High Cut	1	
---	------------------	----------	---------------------	---	--

Detail Description: R&R Bedknives are manufactured from high carbon-boron alloy steel and then hardened to RC46-49 to match the temper of our reel blades and original equipment reels. Bedknives are surface ground on the top and front edge and straightened three times before being packaged with oil for rust prevention. All R&R Bedknives now have an increased front edge grind for added life. All R&R Bedknives are guaranteed against defects in material and workmanship under normal use for the life of the part.:

2	R63-8610	63-8610	Bedknife - Fairway Cut .375 - 1.00 HOC	1	
---	-----------------	---------	--	---	--

Detail Description: R&R Bedknives are manufactured from high carbon-boron alloy steel and then hardened to RC46-49 to match the temper of our reel blades and original equipment reels. Bedknives are surface ground on the top and front edge and straightened three times before being packaged with oil for rust prevention. All R&R Bedknives now have an increased front edge grind for added life. All R&R Bedknives are guaranteed against defects in material and workmanship under normal use for the life of the part.:

2	R94-6396	10-4900, 54-9150, 94-6396, Oct-00	Bedknife - High Cut 5/16"-1" HOC	1	
---	-----------------	--	----------------------------------	---	--

All original equipment manufacturers names and part numbers are used for identification purposes only, and we are in no way implying that our products are original equipment parts. Prices subject to change without notice.



Replaces Toro Reelmaster 5400D Parts

Cutting Unit - Model 03527 & 03528

Reel & Bedknife



Item No	R&R Part No.	OEM Part No.	Description	Qty Req	Order Quantity
---------	--------------	--------------	-------------	---------	----------------

Detail Description: R&R Bedknives are manufactured from high carbon-boron alloy steel and then hardened to RC46-49 to match the temper of our reel blades and original equipment reels. Bedknives are surface ground on the top and front edge and straightened three times before being packaged with oil for rust prevention. All R&R Bedknives now have an increased front edge grind for added life. All R&R Bedknives are guaranteed against defects in material and workmanship under normal use for the life of the part.:

2	R150462	63-8610, 94-6396	Bedknife - 7 Hole Thick 5/16	1	
---	----------------	---------------------	------------------------------	---	--

Detail Description: R&R Bedknives are manufactured from high carbon-boron alloy steel and then hardened to RC46-49 to match the temper of our reel blades and original equipment reels. Bedknives are surface ground on the top and front edge and straightened three times before being packaged with oil for rust prevention. All R&R Bedknives now have an increased front edge grind for added life. All R&R Bedknives are guaranteed against defects in material and workmanship under normal use for the life of the part.:

Overhaul Kits

3	R107-1590		Overhaul Kit - Cutting Unit	0	
---	------------------	--	-----------------------------	---	--

Detail Description: Includes 2 ea.: R253-96 Seals, R254-72 Bearing Cups, R254-94 Bearings; 1 ea.: R253-61 Seal & R32127-46 Locknut:

Service Tools

4	R51-0880	51-0880	Bedknife Screw Driver Tool	0	
---	-----------------	---------	----------------------------	---	--

Detail Description: Easily install and remove bed knife screws with the help of a ratchet with 3/8" drive. Tool manufactured with hardened alloy steel.:

Other Parts Available

10	R104-3388	104-3388	Seal - Double Lip Bearing Housing	2	
11	R104-3399	104-3399	Housing Assy - Bearing Reel	2	

All original equipment manufacturers names and part numbers are used for identification purposes only, and we are in no way implying that our products are original equipment parts. Prices subject to change without notice.



Replaces Toro Reelmaster 5400D Parts

Cutting Unit - Model 03527 & 03528

Reel & Bedknife



Item No	R&R Part No.	OEM Part No.	Description	Qty Req	Order Quantity
13	R254-72	01-103-0050, 01-103-0120, 01-103-0140, 1-543508, 254-71, 254-72, 40439, 62-3340, 99-4511	Cup - Bearing	2	
14	R254-94	1-543509, 254-94, 32-8090, 32-8240, 32-9640, 40440, 62-3330	Tapered Bearing Cone	2	
15	R32127-46	32127-46, 3296-60	Locknut	1	
16	R323-2	01-178-0604, 323-2	Bolt - Hex HD 3/8-16 x 1	1	
17	R100-7113-01	100-7113-01	Counterweight	1	
18	R3296-39	32127-25, 32128-36, 3290-357, 3296-17, 3296-22, 3296-39, 915663P, 99-7443	Locknut - 3/8-16 Nylon	12	
19	R93-1394	93-1394	Nut - Splined RH Thrd .812 Long	1	
20	R100-7140	100-7140	Frame Assy	1	
21	R150476	3-3816, 3-6462, 57-4910	Screw - Bedknife 5/16-18 x 5/8	7	
21	R150475	3-6462	Screw - Bedknife Stainless 5/16-18 x 5/8	7	

All original equipment manufacturers names and part numbers are used for identification purposes only, and we are in no way implying that our products are original equipment parts. Prices subject to change without notice.



Replaces Toro Reelmaster 5400D Parts

Cutting Unit - Model 03527 & 03528

Reel & Bedknife



Item No	R&R Part No.	OEM Part No.	Description	Qty Req	Order Quantity
<i>Detail Description: Pre-Packaged in bags of 50:</i>					
22	R100-7124-01	100-7124-01	Bed Bar - 7 Hole	1	
23	R100-7123	100-7123	Spacer - Bed Bar	2	
24	R3290-316	3290-316, 57-3210	Bolt - Hex Tap 3/8-16 x 1-1/2	4	
25	R3255-9	3255-9	Washer - Lock 3/8 Ext. Star	4	
35	R100-7105	100-7105, 100-7105-01	Bracket - RH HOC Rear Roller	1	
36	R100-7106	100-7106, 100-7106-01	Bracket - LH HOC Rear Roller	1	
37	R445722	30-8980, 32128-2, 32128-20, 32128-20	Nut - Serrated Washer	4	
38	R322-16	322-16, Apr-00	Bolt - Hex HD 5/16-18 x 1-1/8	4	
39	R104-3357	104-3357	Carrier Frame Assy	1	
40	R3-1506	256-287, 3-1506, 75-2160, Apr-50	Bushing - Bronze	2	
41	R104-3365	104-3365	Support Rod	1	
42	R104-3366	104-3366	Spacer - Hardened - Support Rod	2	
43	R67-1750	67-1750	Bushing - 1 Long	2	
44	R302-60	302-60	Zerk - Grease 90 Deg.	1	
45	R104-3396	104-3396	Bolt - Hex HD 3/8-16 x 2-1/4	1	

All original equipment manufacturers names and part numbers are used for identification purposes only, and we are in no way implying that our products are original equipment parts. Prices subject to change without notice.



Replaces Toro Reelmaster 5400D Parts

Cutting Unit - Model 03527 & 03528

Reel & Bedknife



Item No	R&R Part No.	OEM Part No.	Description	Qty Req	Order Quantity
46	R32128-43	30-8990, 32128-43, 3290-357	Nut - Flanged Whiz - 3/8-16	1	
47	R99-8662	99-8662	Tube - Spring	1	
48	R67-7960	27-2890, 62-5070, 67-7960	Decal - Warning	1	
48	R93-6688	93-6688	Decal - Warning	1	
49	R443818	01-191-0813, 3218-18, 3218-5	Nut - 1/2-13 Hex Jam Zinc	3	
50	R453017	01-166-0050, 01-166-0240, 01-166-0800, 24-13-AD, 24-14-AD, 32-8110, 3256-26, 3256-6, 453017, 69-8980, 87-7270	Washer - Flat 1/2	2	
50	R455012	3256-26, 41-8440	Washer - Flat 1/2 x 3/4	2	
50	R87-7270-01	87-7270	Washer - Flat 1/2	2	
51	R104-3355	104-3355	Rod - Spring	1	
52	R104-3394	104-3394	Spring - Compression	1	
53	R104-3661	104-3661	Bracket - Spring	1	
54	RF5003	32127-29, 32131-5, 32132-5, 3296-23	Locknut - ESNA 1/2-13	1	

All original equipment manufacturers names and part numbers are used for identification purposes only, and we are in no way implying that our products are original equipment parts. Prices subject to change without notice.



Replaces Toro Reelmaster 5400D Parts

Cutting Unit - Model 03527 & 03528

Reel & Bedknife



Item No	R&R Part No.	OEM Part No.	Description	Qty Req	Order Quantity
55	R3234-24	3234-24, 3234-8, 3234.24, 66-9301	Bolt - Hex Ser Was HD 3/8-16 x 1-1/4	1	
57	R104-3373-01	104-3373-01	Bracket - RH HOC Front Roller	1	
58	R104-3375-01	104-3375-01	Bracket - LH HOC Front Roller	1	
59	R100-4181	100-4181	Shield Assy	1	
60	R36-7260	36-7260	Bar - Cut Off Grass Shield	1	
61	R3234-4	3234-4	Bolt - Hx Ser Was HD 1/4-20 x 3/4	2	
62	R32144-73	104-2065, 32144-73	Screw - Machine Hex Washer Head	5	
63	R100-7136	100-7136	Rear Shield Assy	1	
64	R75-1720	75-1720	Flap - Rubber Rear Deflector	2	
65	R700382	700382	Rivet - Guard	4	
66	R100-7126	100-7126	Bolt - Wheel 7/16-20 x 1-1/2 GR5	2	
67	R104-8216	104-8216	Screw - Sq HD Set 3/8-24 x 1-1/2	4	
68	R301504	2296-42, 301504, 32127-24, 32128-33, 32146-17, 3296-16, 3296-42, 3296-42 , 915661P	Locknut - ESNA 1/4-20	2	
69	R3231-25	01-173-0610, 30-9970, 3231-25, 3231-3, 900064P	Bolt - Carriage 3/8-16 x 1-1/4	2	

All original equipment manufacturers names and part numbers are used for identification purposes only, and we are in no way implying that our products are original equipment parts. Prices subject to change without notice.



Replaces Toro Reelmaster 5400D Parts

Cutting Unit - Model 03527 & 03528

Reel & Bedknife



Item No	R&R Part No.	OEM Part No.	Description	Qty Req	Order Quantity
70	R3234-19	3234-19	Bolt - Hex Washer 3/8-16x1-3/4	2	
71	R3234-5	3234-5, 62-3310	Bolt - 5/16-18x3/4 Hx Ser Was HD	2	
72	R453011	01-166-0100, 01-166-0120, 01-166-0270, 01-166-0500, 01-166-0600, 01-166-0620, 132-4593, 2356-3, 237-12, 24-10-AD, 24-11-AD, 24-11-BD, 24-12-AD, 24-12-BD, 30-9310, 32-8190, 3256-24, 3256-3, 3256-36, 3256-4, 453011, 47-9950, 48-9220, 513458, 7-0052	Washer - Flat 3/8 SAE Y/Zinc	2	
73	R323-49	323-49	Bolt - HOC 3/8-16 x 3 1/2	2	
74	R400264	01-150-0180, 01-178-0610, 20-48-AD, 20-48-AGD, 32-9160, 3224-3, 323-29, 323-7, 400264, 908035P	Bolt - Hex HD 3/8-16 x 1-1/4	4	
75	R83-4720-01	83-4720-01	Torsion Spring - RH	1	

All original equipment manufacturers names and part numbers are used for identification purposes only, and we are in no way implying that our products are original equipment parts. Prices subject to change without notice.



Replaces Toro Reelmaster 5400D Parts

Cutting Unit - Model 03527 & 03528

Reel & Bedknife



Item No	R&R Part No.	OEM Part No.	Description	Qty Req	Order Quantity
76	R83-4730-01	83-4730-01	Torsion Spring - LH	1	
77	R3256-49	3256-49	Washer - Flat 3/16x9/16x18GA	4	
78	R120-2072	100-6426, 108-6487, 112-9200, 120-2072, 93-1375	Hydraulic Gear Motor	1	
79	R75-4010	104-8219, 75-4010	Grass Basket	1	
<i>Detail Description:
Please note: Due to excessive air freight charges, this item will be shipped ground freight.:</i>					
80	R75-4040	104-8214-03, 75-4040	Support - Outer LH	1	
81	R75-4050	75-4050	Support - RH Outer	1	
82	R75-4030	75-4030, 75-4030-03	Support - Inner LH	1	
83	R75-4020	75-4020	Support - RH Inner	1	
84	R323-6	01-150-0010, 01-178-0608, 20-47-AD, 20-47-AGD, 3224-2, 323-6, 49-3510, 908034P, 908332	Bolt - Hex HD 3/8-16 x 1 GR5 YZ	2	
85	R3269-28	3269-28	Rivet - Pop Grass Basket	10	
86	R75-3930	75-3930	Pin - Grass Basket	2	
87	R700414	302-11, 302-19, 302-4, 32-8170	Zerk - Grease 1/4-28 45 Deg	2	

All original equipment manufacturers names and part numbers are used for identification purposes only, and we are in no way implying that our products are original equipment parts. Prices subject to change without notice.