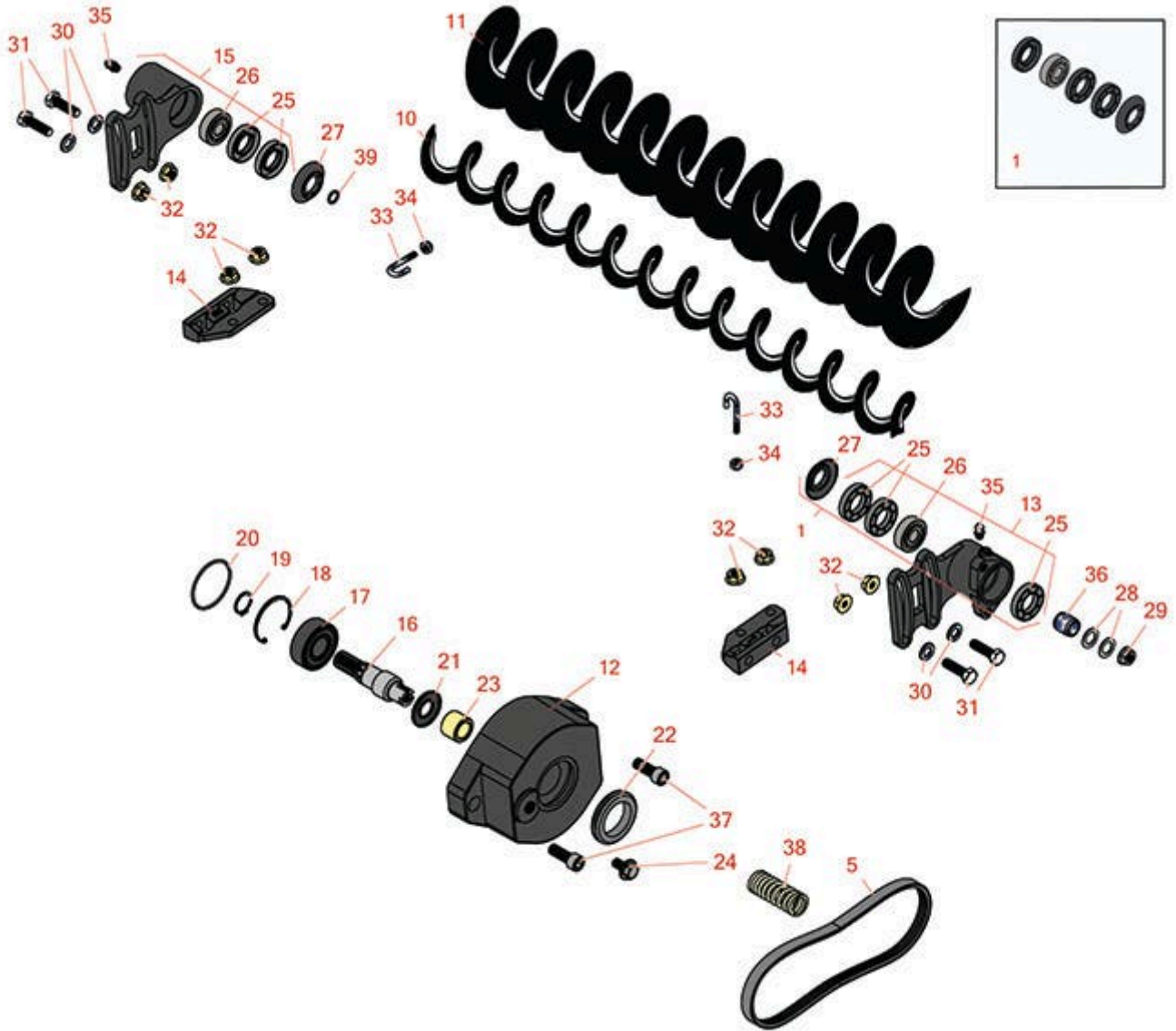




# Replaces Toro Reelmaster 6700D Parts

DPA Cutting Unit - Models 03863, 03864, 03698 & 03699  
Rear Roller Brush - Model 03688



All original equipment manufacturers names and part numbers are used for identification purposes only, and we are in no way implying that our products are original equipment parts. Prices subject to change without notice.



# Replaces Toro Reelmaster 6700D Parts

DPA Cutting Unit - Models 03863, 03864, 03698 & 03699

Rear Roller Brush - Model 03688



Item No	R&R Part No.	OEM Part No.	Description	Qty Req	Order Quantity
<b>Overhaul Kit</b>					
1	<b>R110-4086</b>	110-4086	Kit - Bearing	1	
<i>Detail Description: Includes 1 ea: R95-0707 Bearing, R108-4172 Seal; &amp; 3 ea: R106-8530 Seal;</i>					
<b>Belts</b>					
5	<b>R115-0833</b>	115-0833	Belt- Brush 7 in	1	
<b>Other Parts Available</b>					
10	<b>R108-4193</b>	108-4193	Brush - Roller - 2 OD	1	
11	<b>R110-1740</b>	110-1740	Brush-Roller (High HOC) 3.5 in OD	1	
12	<b>R108-4201</b>	108-4201	Bearing Housing Assy	1	
13	<b>R108-4495</b>	108-4495	Bearing Housing Assy - Driven	1	
14	<b>R108-4480</b>	108-4480	Bracket - Rear Roller Brush	2	
15	<b>R108-4496</b>	108-4496	Bearing Housing Assy - Non Driven	1	
16	<b>R108-4234</b>	108-4234	Shaft - Drive	1	
17	<b>R93-2559</b>	93-2559	Bearing	1	
18	<b>R32120-62</b>	32120-62	Ring - Retaining	1	
19	<b>R458013</b>	30-0580, 32120-72, 458013, 93-2525, 936125	Ring - Retaining	1	
20	<b>R112-6967</b>	112-6967	O-Ring	1	
21	<b>R107-7795</b>	107-7795	Seal - Oil	1	
22	<b>R240-7</b>	240-7	Grommet - Rubber - 2 in OD	1	

All original equipment manufacturers names and part numbers are used for identification purposes only, and we are in no way implying that our products are original equipment parts. Prices subject to change without notice.



## Replaces Toro Reelmaster 6700D Parts

*DPA Cutting Unit - Models 03863, 03864, 03698 & 03699  
Rear Roller Brush - Model 03688*



Item No	R&R Part No.	OEM Part No.	Description	Qty Req	Order Quantity
23	<b>R108-4477</b>	108-4477	Spacer	1	
24	<b>R27-0411</b>	27-0411	Bolt - Shoulder	1	
25	<b>R106-8530</b>	106-8530	Seal - Oil	3	
26	<b>R95-0707</b>	95-0707	Bearing - Self Aligning	1	
27	<b>R108-4172</b>	108-4172	Seal - Excluder	1	
28	<b>R112-6957</b>	112-6957	Washer - Hardened	2	
29	<b>R104-8301</b>	104-8301, 104-9301, 109-6658, 133-7570	Locknut - 3/8-16 Nylon Flanged	1	
30	<b>R94-6936</b>	94-6936, 94-9236	Washer - Hardened - 5/16 SAE	4	
31	<b>R322-16</b>	322-16, Apr-00	Bolt - Hex HD 5/16-18 x 1-1/8	4	
32	<b>R104-8300</b>	104-8300, 104-8300, 119-4041	Locknut - 5/16-18 Flanged Y/Zinc	4	
33	<b>R105-9632</b>	105-9632	Bolt - J	2	
34	<b>R3296-2</b>	32127-10, 3296-2, 9157404	Nut - #10 Lock	2	

All original equipment manufacturers names and part numbers are used for identification purposes only, and we are in no way implying that our products are original equipment parts. Prices subject to change without notice.



## Replaces Toro Reelmaster 6700D Parts

*DPA Cutting Unit - Models 03863, 03864, 03698 & 03699*

*Rear Roller Brush - Model 03688*



Item No	R&R Part No.	OEM Part No.	Description	Qty Req	Order Quantity
35	<b>R302-5</b>	21-6010, 302-11, 302-37, 302-47, 302-5, 302-57, 302-58, 302-6, 31-0300, 32-9660, 60-0800, 62-3880, 92-4181	Fitting - Grease	1	
36	<b>R108-4491</b>	108-4491, 127-7139	Spacer - Hardened	1	
37	<b>R3274-7</b>	3247-7, 3274-7	Bolt - Soc HD Cap 3/8-16 x 1	2	
38	<b>R115-0839</b>	115-0839	Spring - Idler - SS	1	
39	<b>R237-22</b>	107-8844, 237-22, 237-78	O-Ring	1	

All original equipment manufacturers names and part numbers are used for identification purposes only, and we are in no way implying that our products are original equipment parts. Prices subject to change without notice.