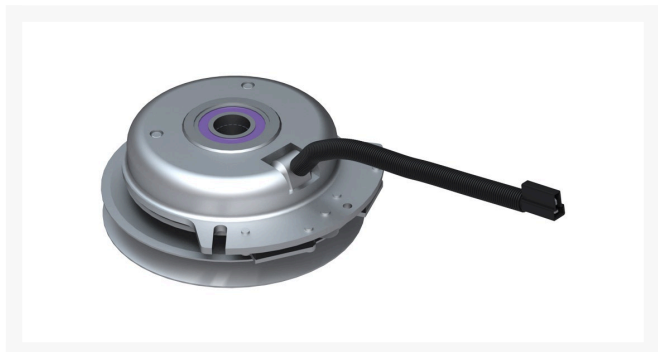




## Clutch - Xtreme Pto Clutch

RTCU37594X



### Details

Xtreme Clutches feature machined pulleys, Cool Coil technology, high performance bearings, stainless steel straps and rivets, Xtreme's Tough Wire Protection System and a replaceable bearing, the Xtreme design is pure performance in every aspect.

- Machined Pulleys - CNC machined billet pulleys are stronger, quieter, smoother and maintain stable and faster blade speeds.
- Fatboy Bearings - Increased the size of the pulley bearing to improve bearing life.
- High Temp Bearing - Xtreme's special blend of bearing grease is rated more than two times what is required, delivering Xtreme bearing life.
- Triple Protected Wires - Every Xtreme clutch has an integrated watertight connection with three layers of protection.
- Replaceable Bearing - Xtreme mower clutches have a replaceable pulley bearing!
- Stainless Steel Rivets - Xtreme clutches use tough stainless steel brake rivets for long and safe service
- Xtreme "Cool Coil" - The "Xtremely Cool Coil" runs over 20% cooler. Electromagnetic clutches run very hot. Most competitive clutches run around 220 degrees. The Xtreme proprietary composite coil runs 175 degrees. The difference is simple: Less heat = ex

### Replaces

John Deere	TCU37594
R&R Products	RTCU37594

### GA Power Equipment Spares

11 Sodium St Narangba, 4504  
1300 363 004

<https://rgs.rrproducts.com/>



# Clutch - Xtreme Pto Clutch

RTCU37594X



## Specifications

Manufacturer

Xtreme Equipment

## Fits Models

John Deere 636M Quik-Trak Stand-On Mower

**GA Power Equipment Spares**

11 Sodium St Narangba, 4504

1300 363 004

<https://rgs.rrproducts.com/>